







d  
c  
b  
a  
b  
c  
d



**BUILDING INSPECTION**

THESE PLANS NOT APPROVED  
ELECTRICAL CONTRACTORS MUST  
OBTAIN APPROVAL FROM APPROVAL  
AND REBUILT

THESE PLANS NOT APPROVED  
MECHANICAL CONTRACTORS MUST  
OBTAIN APPROVAL FROM APPROVAL  
AND REBUILT

THESE PLANS NOT APPROVED  
PLUMBING CONTRACTORS MUST  
OBTAIN APPROVAL FROM APPROVAL  
AND REBUILT

APPROVED UNDER MATERIALS MUST COMPLY  
WITH SECTION 904 S.F.C.

APPROVED UNDER MATERIALS MUST COMPLY  
WITH SECTION 904 S.F.C.

APPROVED UNDER MATERIALS MUST COMPLY  
WITH SECTION 904 S.F.C.

APPROVED UNDER MATERIALS MUST COMPLY  
WITH SECTION 904 S.F.C.

THIS PLAN REFERRED FOR COMPLIANCE WITH  
STATE HEALTH REGULATIONS  
APPROVED ORANGE COUNTY HEALTH DEPARTMENT  
DATE: 11/17/70  
BY: [Signature]

ONE SET OF PLANS APPROVED BY O.C.H.D.  
TO BE RETURNED ON JOB SITE AT ALL TIMES.

**CONSTRUCTION PLANS FOR**

**MIDDLEBROOK PINES**

**ORANGE COUNTY,**

**FLORIDA**

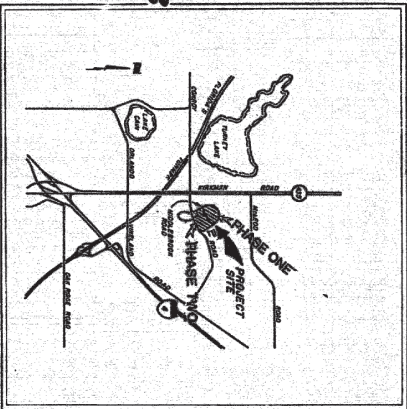
**DEVELOPER:**

**BURG & LASTITION  
INC.**

**ENGINEER:**

**BRINNEY & ASSOCIATES  
CONSULTING ENGINEERS  
1310 W. COLONIAL E. DR.  
ORLANDO, FL. 84-6833  
OWNER:**

**BURG & LASTITION,  
INC.  
354 CYPRESS DR.  
TEQUESTA, FL. 33458 VICINITY MAP  
746-5544**



**INDEX OF SHEETS**

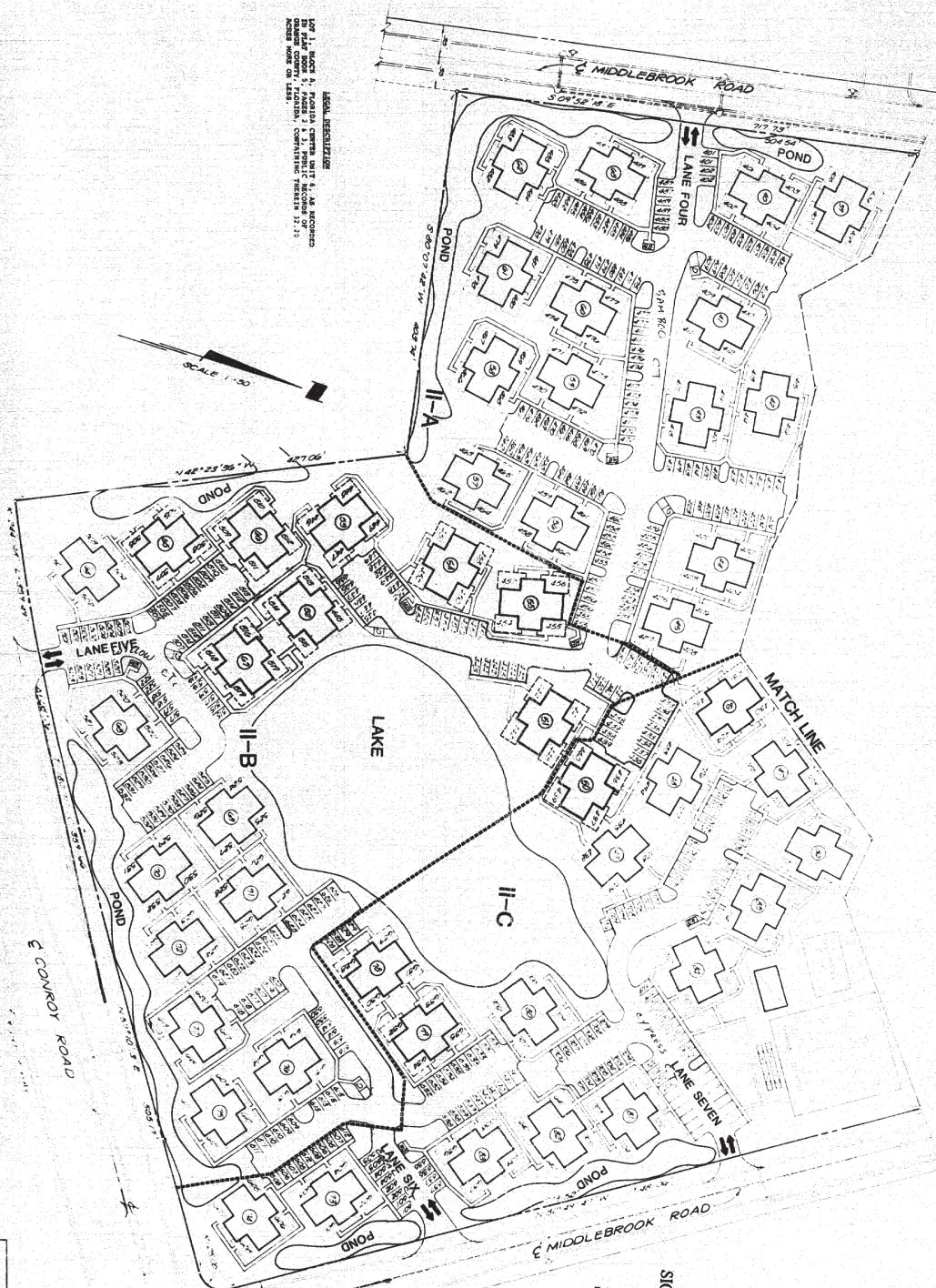
SHEET NO.	DESCRIPTION
1	COVER SHEET
2	SITE PLAN
3	STAKING PLAN
4	PAVING, GRADING, DRAINAGE
5	UTILITY PLAN
6	DRAINAGE DETAILS
7	WATER DETAILS
8	SANITARY DETAILS
9	OFFSITE DRAINAGE





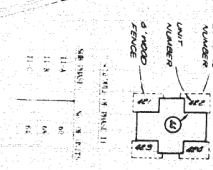


FOR THE RECORD, THE LOCAL RESOLUTION  
 FOR THE RECORD, THE LOCAL RESOLUTION  
 FOR THE RECORD, THE LOCAL RESOLUTION  
 FOR THE RECORD, THE LOCAL RESOLUTION  
 FOR THE RECORD, THE LOCAL RESOLUTION



DATE: 11/1/88

**SITE PLAN**  
 MIDDLEBROOK FIVE  
 BRISLEY & ASSOC. L.L.P.

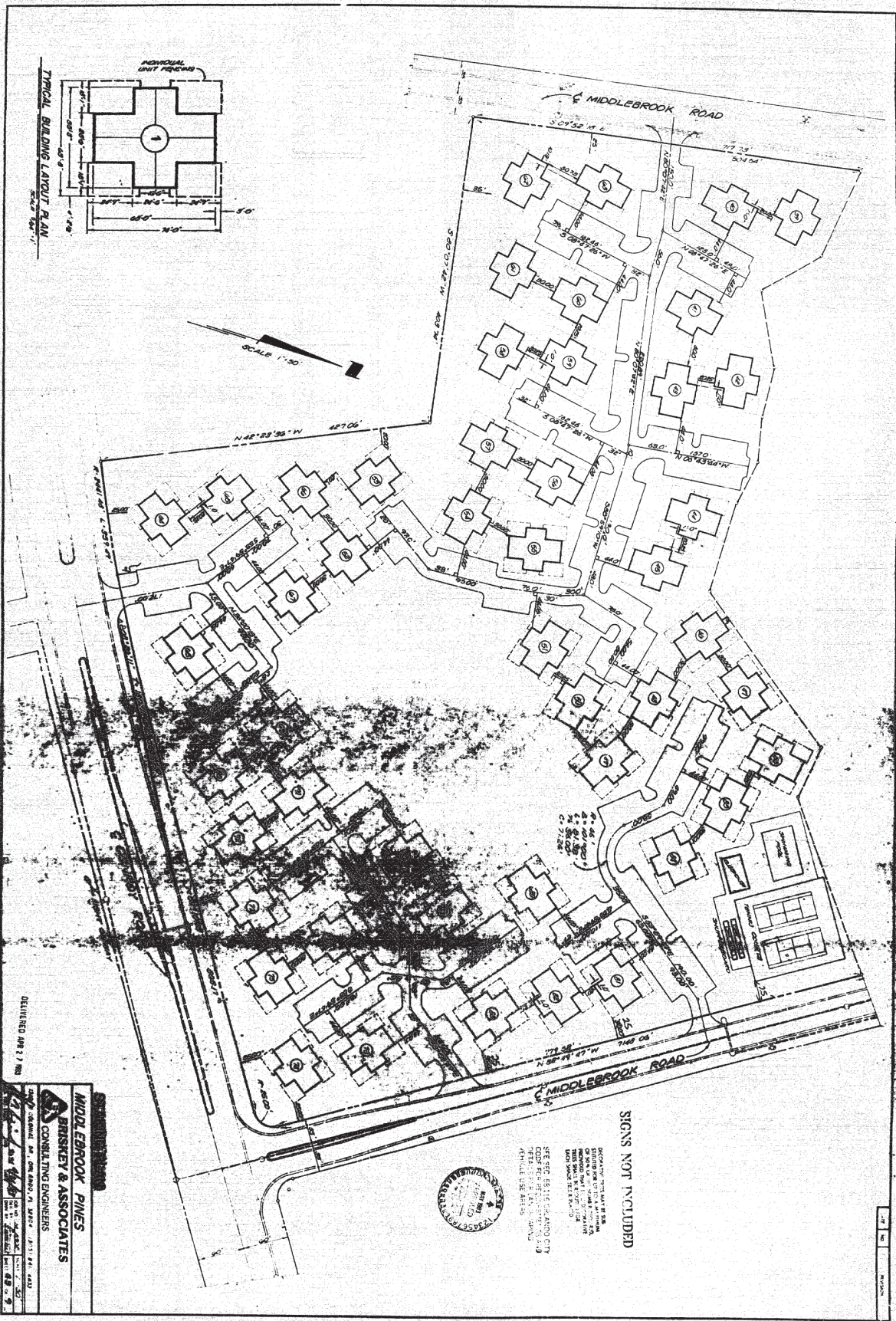
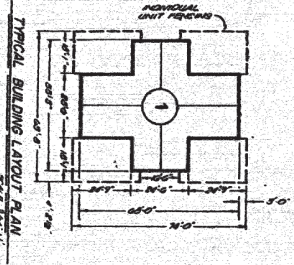


**SIGNS NOT INCLUDED**

NOT TO SCALE  
 SEE PLAN FOR SIGN PLACEMENT  
 SEE PLAN FOR SIGN PLACEMENT  
 SEE PLAN FOR SIGN PLACEMENT







DELIVERED APR 27 1988

**MIDDLEBROOK PINES**  
**BRISKEY & ASSOCIATES**  
 CONSULTING ENGINEERS

176  
 175  
 174  
 173  
 172  
 171  
 170  
 169  
 168  
 167  
 166  
 165  
 164  
 163  
 162  
 161  
 160  
 159  
 158  
 157  
 156  
 155  
 154  
 153  
 152  
 151  
 150  
 149  
 148  
 147  
 146  
 145  
 144  
 143  
 142  
 141  
 140  
 139  
 138  
 137  
 136  
 135  
 134  
 133  
 132  
 131  
 130  
 129  
 128  
 127  
 126  
 125  
 124  
 123  
 122  
 121  
 120  
 119  
 118  
 117  
 116  
 115  
 114  
 113  
 112  
 111  
 110  
 109  
 108  
 107  
 106  
 105  
 104  
 103  
 102  
 101  
 100  
 99  
 98  
 97  
 96  
 95  
 94  
 93  
 92  
 91  
 90  
 89  
 88  
 87  
 86  
 85  
 84  
 83  
 82  
 81  
 80  
 79  
 78  
 77  
 76  
 75  
 74  
 73  
 72  
 71  
 70  
 69  
 68  
 67  
 66  
 65  
 64  
 63  
 62  
 61  
 60  
 59  
 58  
 57  
 56  
 55  
 54  
 53  
 52  
 51  
 50  
 49  
 48  
 47  
 46  
 45  
 44  
 43  
 42  
 41  
 40  
 39  
 38  
 37  
 36  
 35  
 34  
 33  
 32  
 31  
 30  
 29  
 28  
 27  
 26  
 25  
 24  
 23  
 22  
 21  
 20  
 19  
 18  
 17  
 16  
 15  
 14  
 13  
 12  
 11  
 10  
 9  
 8  
 7  
 6  
 5  
 4  
 3  
 2  
 1



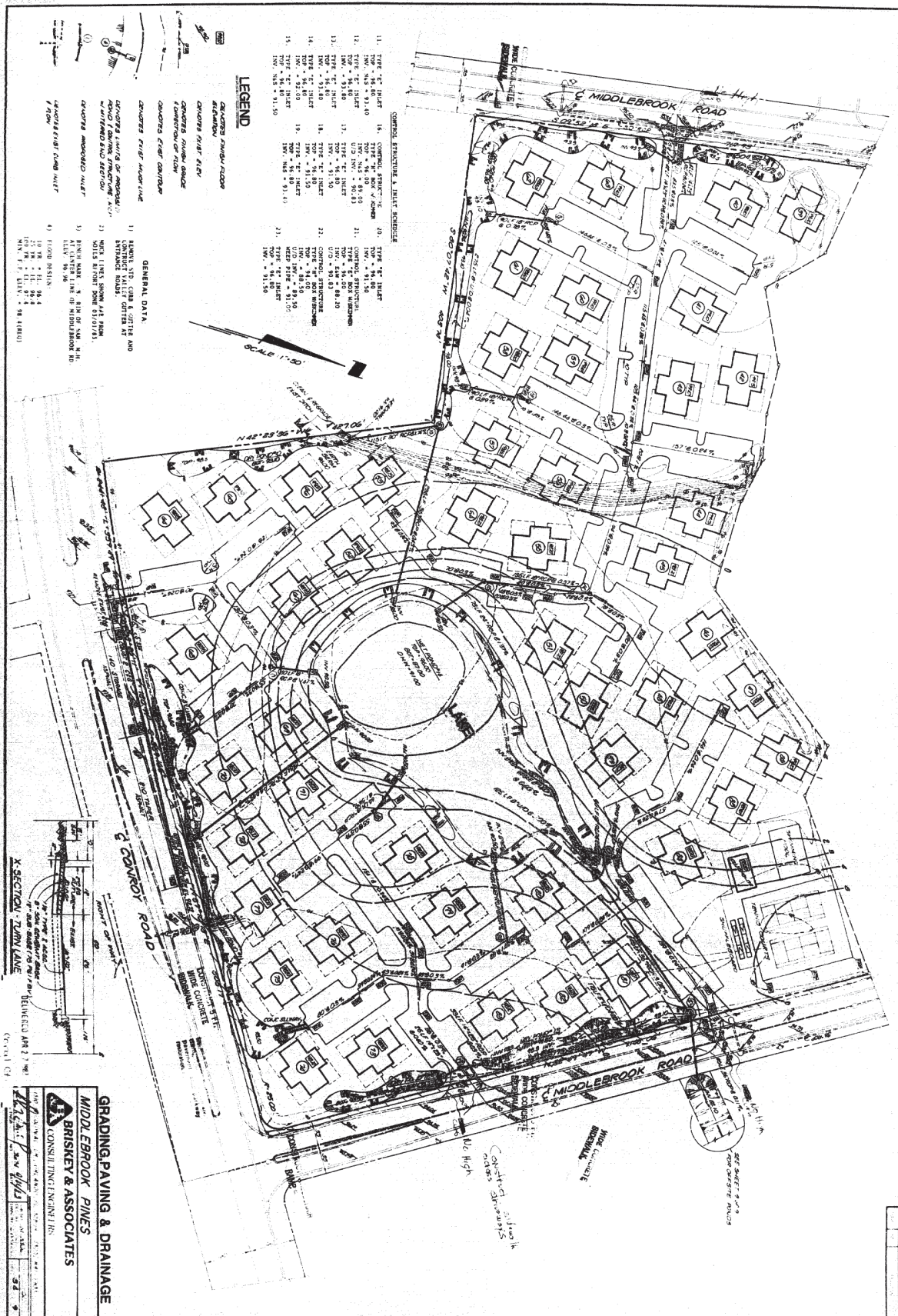
REGISTERED SITE PLANNING CITY  
 STATE OF CALIFORNIA  
 451111 US AIRS

SIGNS NOT INCLUDED









- LEGEND**
- 1. CHANGES FROM PREVIOUS EDITIONS
  - 2. CHANGES FROM PREVIOUS EDITIONS
  - 3. CHANGES FROM PREVIOUS EDITIONS
  - 4. CHANGES FROM PREVIOUS EDITIONS
  - 5. CHANGES FROM PREVIOUS EDITIONS
  - 6. CHANGES FROM PREVIOUS EDITIONS
  - 7. CHANGES FROM PREVIOUS EDITIONS
  - 8. CHANGES FROM PREVIOUS EDITIONS
  - 9. CHANGES FROM PREVIOUS EDITIONS
  - 10. CHANGES FROM PREVIOUS EDITIONS
  - 11. CHANGES FROM PREVIOUS EDITIONS
  - 12. CHANGES FROM PREVIOUS EDITIONS
  - 13. CHANGES FROM PREVIOUS EDITIONS
  - 14. CHANGES FROM PREVIOUS EDITIONS
  - 15. CHANGES FROM PREVIOUS EDITIONS
  - 16. CHANGES FROM PREVIOUS EDITIONS
  - 17. CHANGES FROM PREVIOUS EDITIONS
  - 18. CHANGES FROM PREVIOUS EDITIONS
  - 19. CHANGES FROM PREVIOUS EDITIONS
  - 20. CHANGES FROM PREVIOUS EDITIONS
  - 21. CHANGES FROM PREVIOUS EDITIONS
  - 22. CHANGES FROM PREVIOUS EDITIONS
  - 23. CHANGES FROM PREVIOUS EDITIONS
  - 24. CHANGES FROM PREVIOUS EDITIONS
  - 25. CHANGES FROM PREVIOUS EDITIONS
  - 26. CHANGES FROM PREVIOUS EDITIONS
  - 27. CHANGES FROM PREVIOUS EDITIONS
  - 28. CHANGES FROM PREVIOUS EDITIONS
  - 29. CHANGES FROM PREVIOUS EDITIONS
  - 30. CHANGES FROM PREVIOUS EDITIONS
  - 31. CHANGES FROM PREVIOUS EDITIONS
  - 32. CHANGES FROM PREVIOUS EDITIONS
  - 33. CHANGES FROM PREVIOUS EDITIONS
  - 34. CHANGES FROM PREVIOUS EDITIONS
  - 35. CHANGES FROM PREVIOUS EDITIONS
  - 36. CHANGES FROM PREVIOUS EDITIONS
  - 37. CHANGES FROM PREVIOUS EDITIONS
  - 38. CHANGES FROM PREVIOUS EDITIONS
  - 39. CHANGES FROM PREVIOUS EDITIONS
  - 40. CHANGES FROM PREVIOUS EDITIONS
  - 41. CHANGES FROM PREVIOUS EDITIONS
  - 42. CHANGES FROM PREVIOUS EDITIONS
  - 43. CHANGES FROM PREVIOUS EDITIONS
  - 44. CHANGES FROM PREVIOUS EDITIONS
  - 45. CHANGES FROM PREVIOUS EDITIONS
  - 46. CHANGES FROM PREVIOUS EDITIONS
  - 47. CHANGES FROM PREVIOUS EDITIONS
  - 48. CHANGES FROM PREVIOUS EDITIONS
  - 49. CHANGES FROM PREVIOUS EDITIONS
  - 50. CHANGES FROM PREVIOUS EDITIONS
  - 51. CHANGES FROM PREVIOUS EDITIONS
  - 52. CHANGES FROM PREVIOUS EDITIONS
  - 53. CHANGES FROM PREVIOUS EDITIONS
  - 54. CHANGES FROM PREVIOUS EDITIONS
  - 55. CHANGES FROM PREVIOUS EDITIONS
  - 56. CHANGES FROM PREVIOUS EDITIONS
  - 57. CHANGES FROM PREVIOUS EDITIONS
  - 58. CHANGES FROM PREVIOUS EDITIONS
  - 59. CHANGES FROM PREVIOUS EDITIONS
  - 60. CHANGES FROM PREVIOUS EDITIONS
  - 61. CHANGES FROM PREVIOUS EDITIONS
  - 62. CHANGES FROM PREVIOUS EDITIONS
  - 63. CHANGES FROM PREVIOUS EDITIONS
  - 64. CHANGES FROM PREVIOUS EDITIONS
  - 65. CHANGES FROM PREVIOUS EDITIONS
  - 66. CHANGES FROM PREVIOUS EDITIONS
  - 67. CHANGES FROM PREVIOUS EDITIONS
  - 68. CHANGES FROM PREVIOUS EDITIONS
  - 69. CHANGES FROM PREVIOUS EDITIONS
  - 70. CHANGES FROM PREVIOUS EDITIONS
  - 71. CHANGES FROM PREVIOUS EDITIONS
  - 72. CHANGES FROM PREVIOUS EDITIONS
  - 73. CHANGES FROM PREVIOUS EDITIONS
  - 74. CHANGES FROM PREVIOUS EDITIONS
  - 75. CHANGES FROM PREVIOUS EDITIONS
  - 76. CHANGES FROM PREVIOUS EDITIONS
  - 77. CHANGES FROM PREVIOUS EDITIONS
  - 78. CHANGES FROM PREVIOUS EDITIONS
  - 79. CHANGES FROM PREVIOUS EDITIONS
  - 80. CHANGES FROM PREVIOUS EDITIONS
  - 81. CHANGES FROM PREVIOUS EDITIONS
  - 82. CHANGES FROM PREVIOUS EDITIONS
  - 83. CHANGES FROM PREVIOUS EDITIONS
  - 84. CHANGES FROM PREVIOUS EDITIONS
  - 85. CHANGES FROM PREVIOUS EDITIONS
  - 86. CHANGES FROM PREVIOUS EDITIONS
  - 87. CHANGES FROM PREVIOUS EDITIONS
  - 88. CHANGES FROM PREVIOUS EDITIONS
  - 89. CHANGES FROM PREVIOUS EDITIONS
  - 90. CHANGES FROM PREVIOUS EDITIONS
  - 91. CHANGES FROM PREVIOUS EDITIONS
  - 92. CHANGES FROM PREVIOUS EDITIONS
  - 93. CHANGES FROM PREVIOUS EDITIONS
  - 94. CHANGES FROM PREVIOUS EDITIONS
  - 95. CHANGES FROM PREVIOUS EDITIONS
  - 96. CHANGES FROM PREVIOUS EDITIONS
  - 97. CHANGES FROM PREVIOUS EDITIONS
  - 98. CHANGES FROM PREVIOUS EDITIONS
  - 99. CHANGES FROM PREVIOUS EDITIONS
  - 100. CHANGES FROM PREVIOUS EDITIONS

**GENERAL DATA**

1. NAME OF JOB: MIDDLEBROOK PINES

2. LOCATION: MIDDLEBROOK, N.H.

3. DATE: 1964

4. SCALE: 1" = 30'

5. SHEET NO. 1 OF 2

6. DRAWN BY: [Name]

7. CHECKED BY: [Name]

8. APPROVED BY: [Name]

9. DATE OF ISSUE: 1964

10. PROJECT NO. 12345

11. CLIENT: [Name]

12. SITE AREA: 100,000 sq. ft.

13. TOTAL AREA: 200,000 sq. ft.

14. PERCENTAGE COVERED: 50%

15. TOTAL COST: \$1,000,000

16. ESTIMATED COST: \$1,000,000

17. BUDGET: \$1,000,000

18. FINANCING: [Details]

19. PERMITS: [Details]

20. REGULATIONS: [Details]

21. ENVIRONMENTAL: [Details]

22. UTILITIES: [Details]

23. GEOTECHNICAL: [Details]

24. SOILS: [Details]

25. CLIMATE: [Details]

26. VEGETATION: [Details]

27. ANIMALS: [Details]

28. HISTORICAL: [Details]

29. CULTURAL: [Details]

30. SOCIAL: [Details]

31. ECONOMIC: [Details]

32. POLITICAL: [Details]

33. LEGAL: [Details]

34. ETHICAL: [Details]

35. MORAL: [Details]

36. RELIGIOUS: [Details]

37. PHILOSOPHICAL: [Details]

38. SCIENTIFIC: [Details]

39. ARTS: [Details]

40. LITERATURE: [Details]

41. MUSIC: [Details]

42. THEATRE: [Details]

43. FILM: [Details]

44. TELEVISION: [Details]

45. RADIO: [Details]

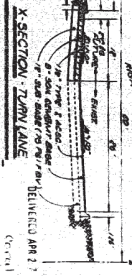
46. PRESS: [Details]

47. JOURNALISM: [Details]

48. EDUCATION: [Details]

49. RESEARCH: [Details]

50. DEVELOPMENT: [Details]



**GRADING, PAVING & DRAINAGE**

**MIDDLEBROOK PINES**

**BRISKEY & ASSOCIATES**

CONSULTING ENGINEERS

1000 [Address]

[City, State]

PHONE [Number]

TELETYPE [Number]

FAX [Number]

WEBSITE [Address]

EMAIL [Address]

DATE: 1964

PROJECT NO. 12345

SHEET NO. 1 OF 2





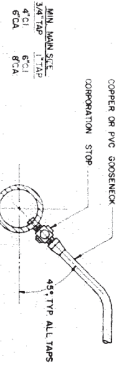




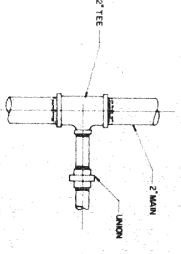




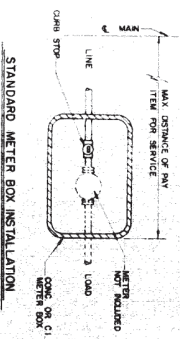




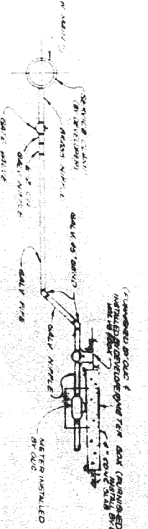
**3/4" 8" TAPPED SERVICE CONNECTION**



**3/4" THRU 2" RIGID SERVICE CONNECTION**

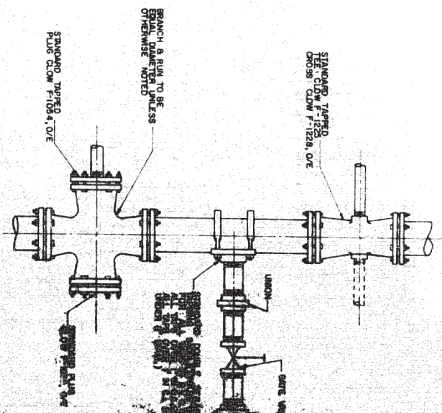


**STANDARD METER BOX INSTALLATION**

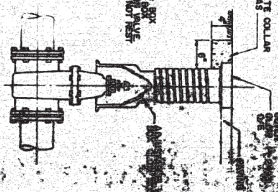


THE CONTRACTOR SHALL CONFORM THE WATER SYSTEM AND COST IN ACCORDANCE WITH O.U.C. SPECIFICATIONS AND STANDARDS.

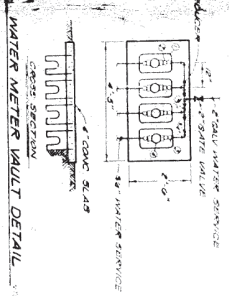
**TYPICAL CONNECTIONS**



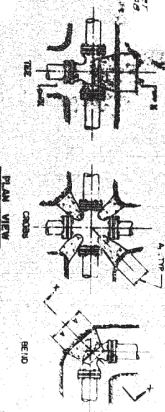
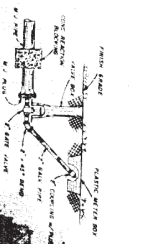
**TYPICAL CONNECTIONS**



**TYPICAL VALVE SETTING**



**WATER METER VAULT DETAIL**



METER	METER VAULT				METER VAULT			
	A	B	C	D	A	B	C	D
1	1	1	1	1	1	1	1	1
2	2	2	2	2	2	2	2	2
3	3	3	3	3	3	3	3	3
4	4	4	4	4	4	4	4	4
5	5	5	5	5	5	5	5	5
6	6	6	6	6	6	6	6	6
7	7	7	7	7	7	7	7	7
8	8	8	8	8	8	8	8	8
9	9	9	9	9	9	9	9	9
10	10	10	10	10	10	10	10	10
11	11	11	11	11	11	11	11	11
12	12	12	12	12	12	12	12	12
13	13	13	13	13	13	13	13	13
14	14	14	14	14	14	14	14	14
15	15	15	15	15	15	15	15	15
16	16	16	16	16	16	16	16	16
17	17	17	17	17	17	17	17	17
18	18	18	18	18	18	18	18	18
19	19	19	19	19	19	19	19	19
20	20	20	20	20	20	20	20	20

**NOTES**

1. ALL DIMENSIONS AND STANDARDS SET BY THE CONTRACTOR SHALL BE IN ACCORDANCE WITH O.U.C. SPECIFICATIONS AND STANDARDS.

2. ALL DIMENSIONS AND STANDARDS SET BY THE CONTRACTOR SHALL BE IN ACCORDANCE WITH O.U.C. SPECIFICATIONS AND STANDARDS.

3. ALL DIMENSIONS AND STANDARDS SET BY THE CONTRACTOR SHALL BE IN ACCORDANCE WITH O.U.C. SPECIFICATIONS AND STANDARDS.

4. ALL DIMENSIONS AND STANDARDS SET BY THE CONTRACTOR SHALL BE IN ACCORDANCE WITH O.U.C. SPECIFICATIONS AND STANDARDS.

5. ALL DIMENSIONS AND STANDARDS SET BY THE CONTRACTOR SHALL BE IN ACCORDANCE WITH O.U.C. SPECIFICATIONS AND STANDARDS.

6. ALL DIMENSIONS AND STANDARDS SET BY THE CONTRACTOR SHALL BE IN ACCORDANCE WITH O.U.C. SPECIFICATIONS AND STANDARDS.

7. ALL DIMENSIONS AND STANDARDS SET BY THE CONTRACTOR SHALL BE IN ACCORDANCE WITH O.U.C. SPECIFICATIONS AND STANDARDS.

8. ALL DIMENSIONS AND STANDARDS SET BY THE CONTRACTOR SHALL BE IN ACCORDANCE WITH O.U.C. SPECIFICATIONS AND STANDARDS.

9. ALL DIMENSIONS AND STANDARDS SET BY THE CONTRACTOR SHALL BE IN ACCORDANCE WITH O.U.C. SPECIFICATIONS AND STANDARDS.

10. ALL DIMENSIONS AND STANDARDS SET BY THE CONTRACTOR SHALL BE IN ACCORDANCE WITH O.U.C. SPECIFICATIONS AND STANDARDS.

11. ALL DIMENSIONS AND STANDARDS SET BY THE CONTRACTOR SHALL BE IN ACCORDANCE WITH O.U.C. SPECIFICATIONS AND STANDARDS.

12. ALL DIMENSIONS AND STANDARDS SET BY THE CONTRACTOR SHALL BE IN ACCORDANCE WITH O.U.C. SPECIFICATIONS AND STANDARDS.

13. ALL DIMENSIONS AND STANDARDS SET BY THE CONTRACTOR SHALL BE IN ACCORDANCE WITH O.U.C. SPECIFICATIONS AND STANDARDS.

14. ALL DIMENSIONS AND STANDARDS SET BY THE CONTRACTOR SHALL BE IN ACCORDANCE WITH O.U.C. SPECIFICATIONS AND STANDARDS.

15. ALL DIMENSIONS AND STANDARDS SET BY THE CONTRACTOR SHALL BE IN ACCORDANCE WITH O.U.C. SPECIFICATIONS AND STANDARDS.

16. ALL DIMENSIONS AND STANDARDS SET BY THE CONTRACTOR SHALL BE IN ACCORDANCE WITH O.U.C. SPECIFICATIONS AND STANDARDS.

17. ALL DIMENSIONS AND STANDARDS SET BY THE CONTRACTOR SHALL BE IN ACCORDANCE WITH O.U.C. SPECIFICATIONS AND STANDARDS.

18. ALL DIMENSIONS AND STANDARDS SET BY THE CONTRACTOR SHALL BE IN ACCORDANCE WITH O.U.C. SPECIFICATIONS AND STANDARDS.

19. ALL DIMENSIONS AND STANDARDS SET BY THE CONTRACTOR SHALL BE IN ACCORDANCE WITH O.U.C. SPECIFICATIONS AND STANDARDS.

20. ALL DIMENSIONS AND STANDARDS SET BY THE CONTRACTOR SHALL BE IN ACCORDANCE WITH O.U.C. SPECIFICATIONS AND STANDARDS.











