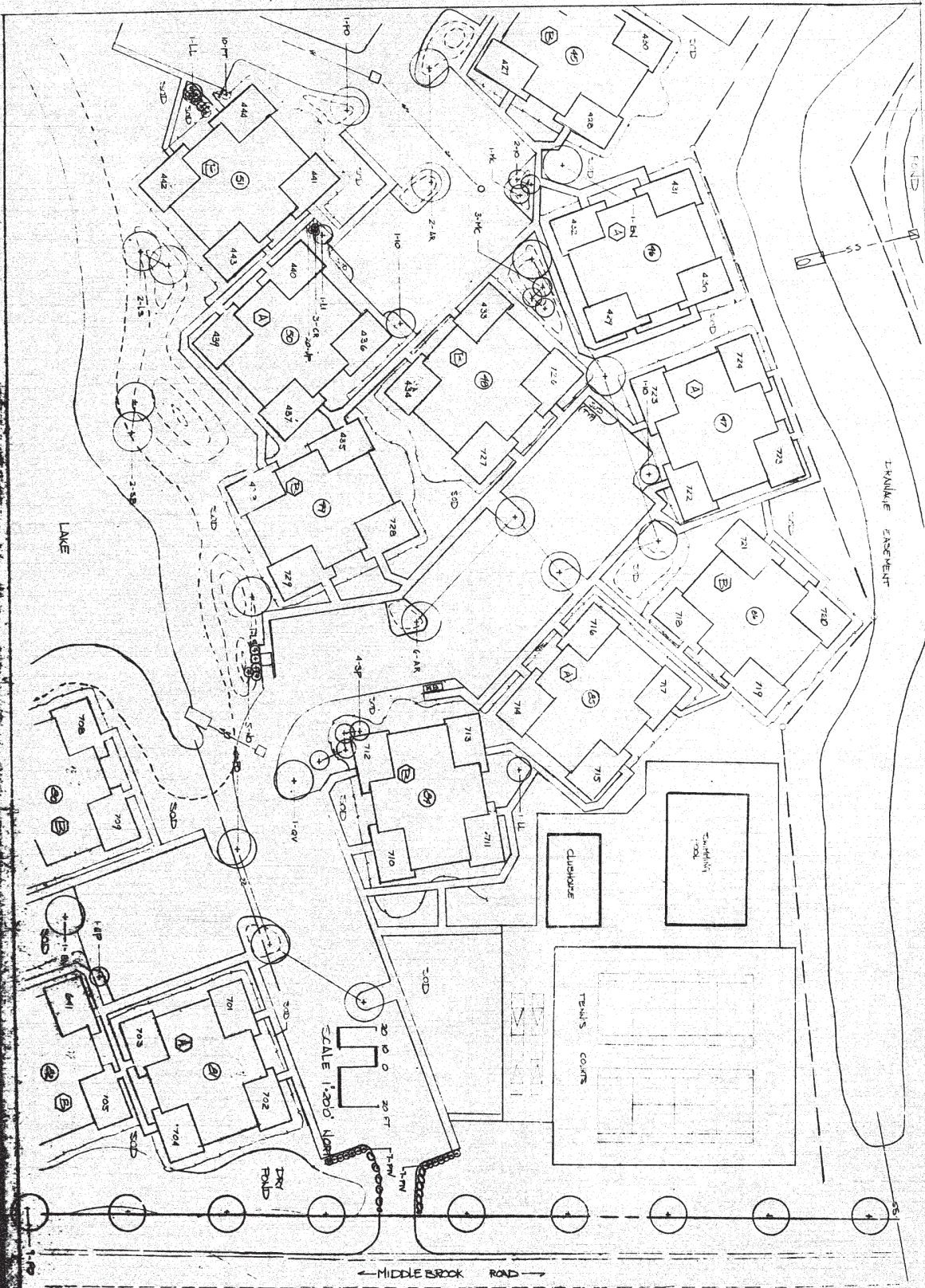


20' 0" 20' 0" 20' 0"  
 SCALE 1" = 20' NORTH

OF

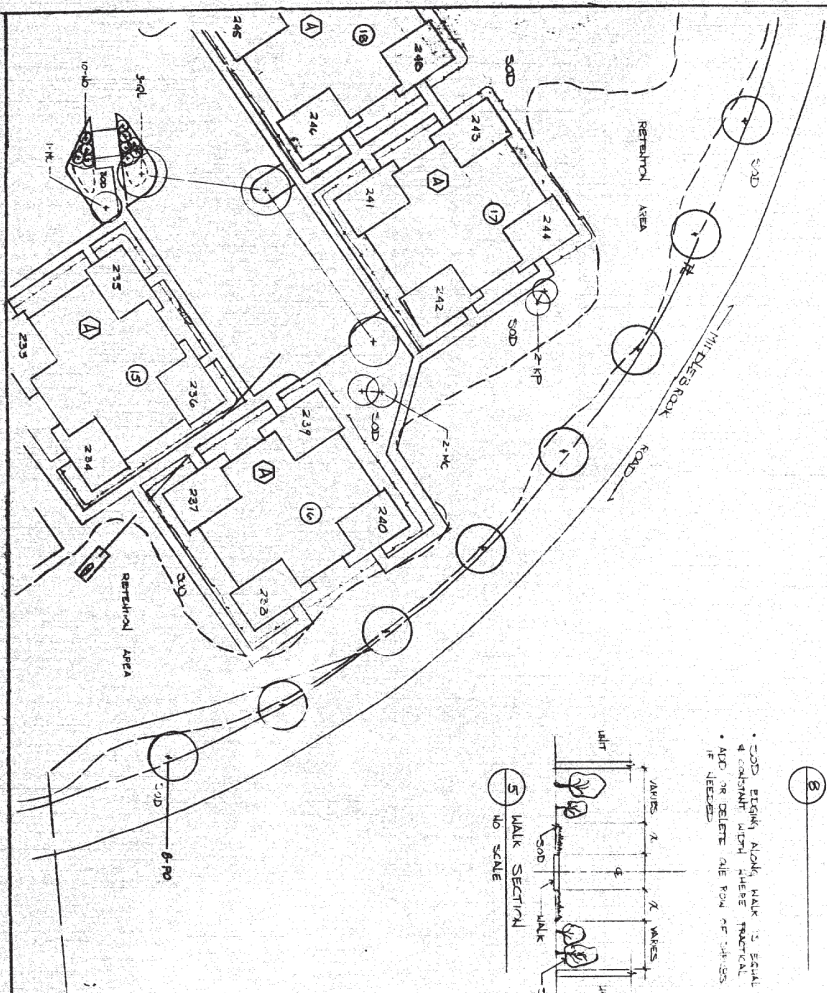
MIDDLEBROOK HOMES

RONALD C. DALE  
 LANDSCAPE ARCHITECT (335) 2/4/317  
 116 EAST COLONIA DRIVE SUITE B GALVESTON TEXAS 77553

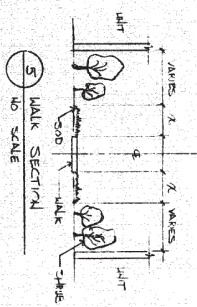


MIDDLEBROOK PINES

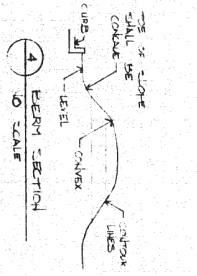
RONALD C DALE  
 LANDSCAPE ARCHITECT (305) 894-1514  
 1001 WEST COLONIAL DRIVE, SUITE 3, ORLANDO, FL 32805



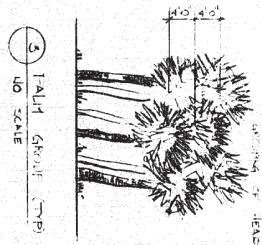
• SOD BEING ALONG WALK IS SCALE  
 & CONSTANT WITH THESE MATERIAL  
 • ALSO TO DELETE THE ROW OF 18-20 INV  
 IF NEEDED



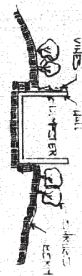
5 WALK SECTION  
 1/8\"/>



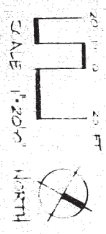
4 ELEM SECTION  
 1/8\"/>



3 PLANT GROUP (TP)  
 1/8\"/>



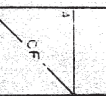
2 CLUSTER SECTION  
 1/8\"/>



1 ELEM SECTION  
 1/8\"/>

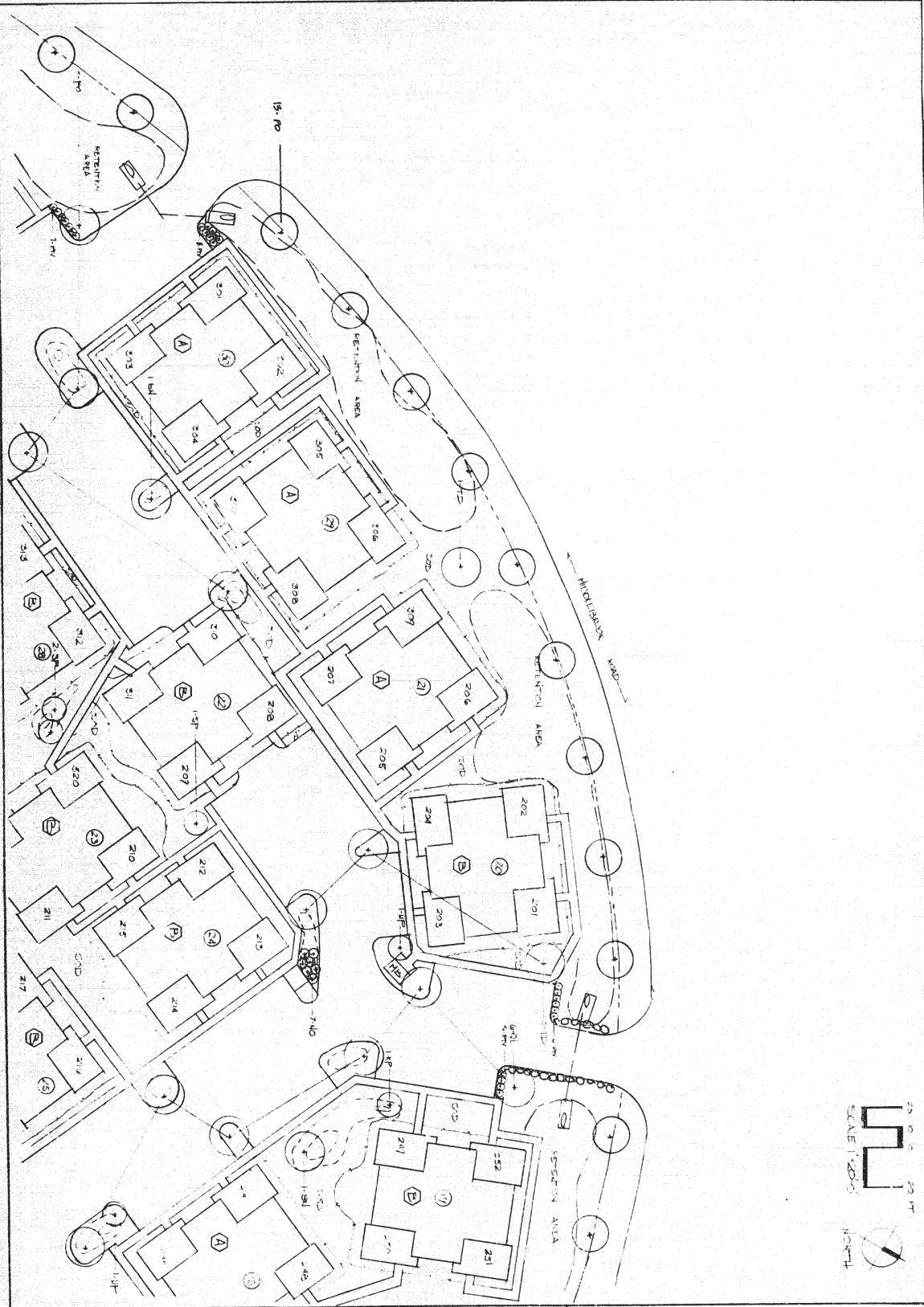


6 FACILITY



MIDDLEBROOK PINES

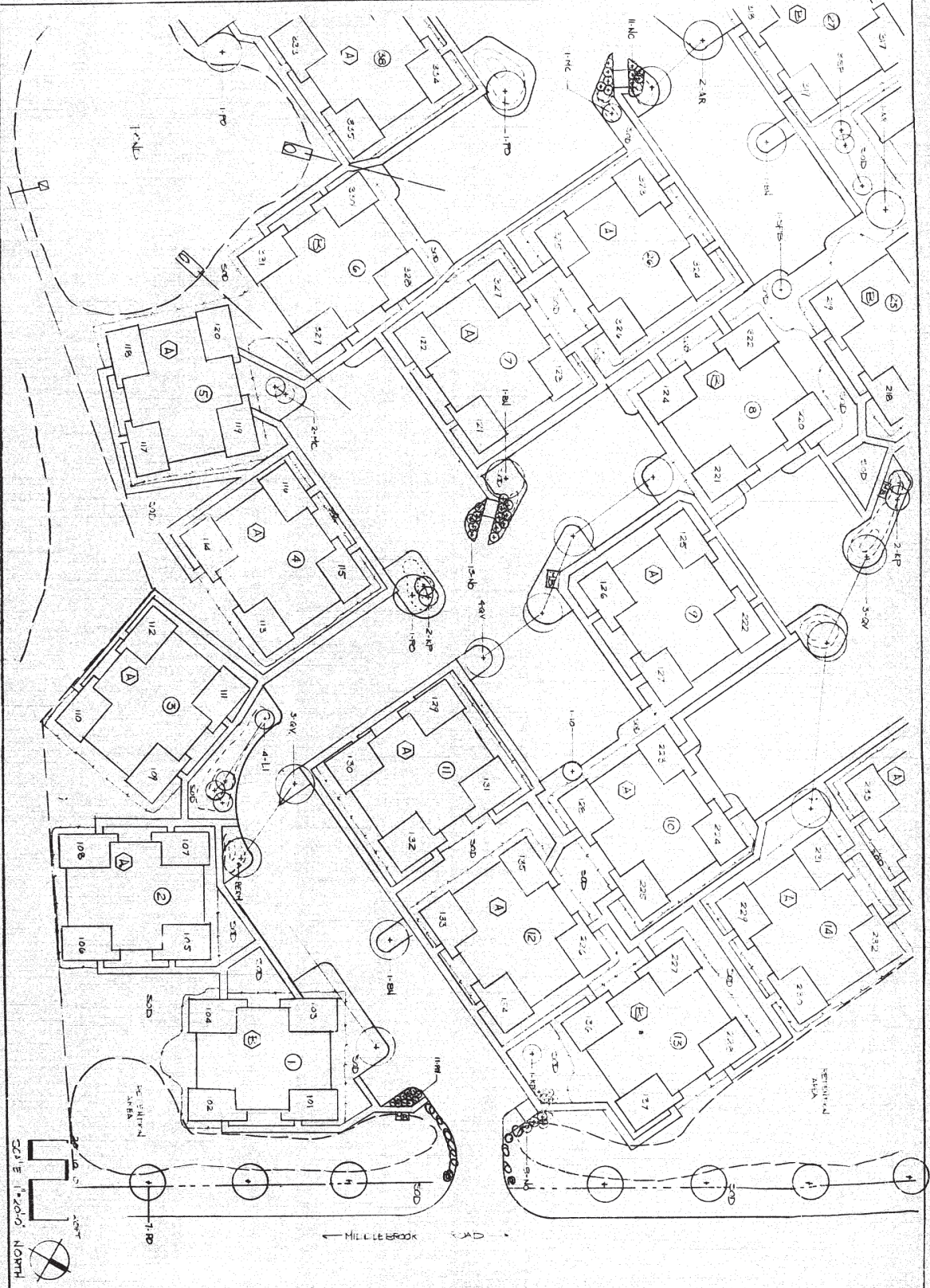
RONALD C DALE  
 LANDSCAPE ARCHITECT (508) 874-1517  
 1216 EAST COGNAC DRIVE SUITE 5 GREENVILLE, SC 29615



OF

MIDDLEBROOK PINES

RONALD C. DALE  
 LANDSCAPE ARCHITECT (305) 874-1317  
 1216 EAST COLONIAL DRIVE SUITE 3 CHELSEA F. 32805



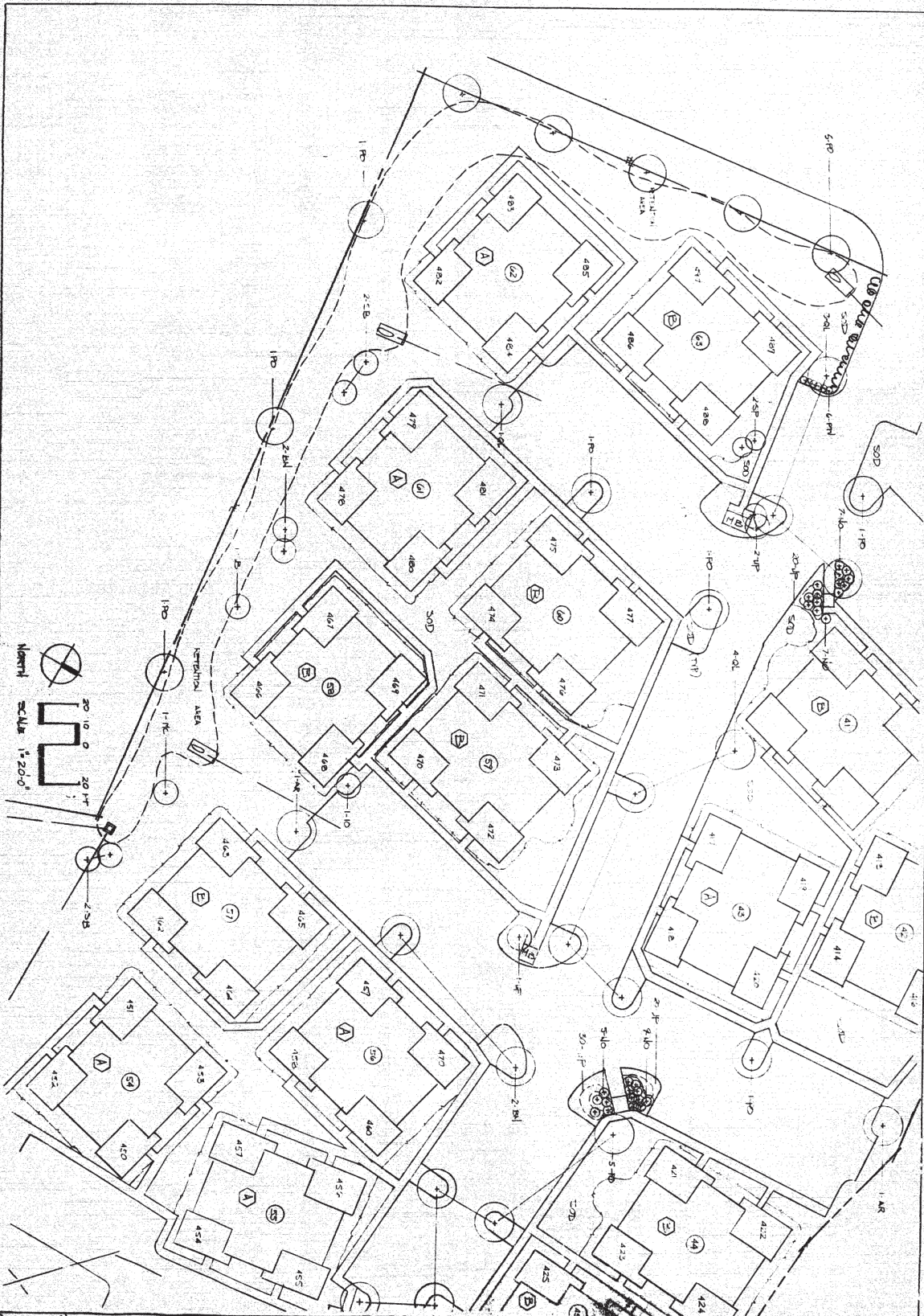
MIDDLEBROOK PINES

RONALD C. DALE  
 LANDSCAPE ARCHITECT (305) 994-1517  
 1216 EAST COLONIAL DRIVE SUITE 3 ORLANDO FL 32805



MIDDLEBROOK FLATS

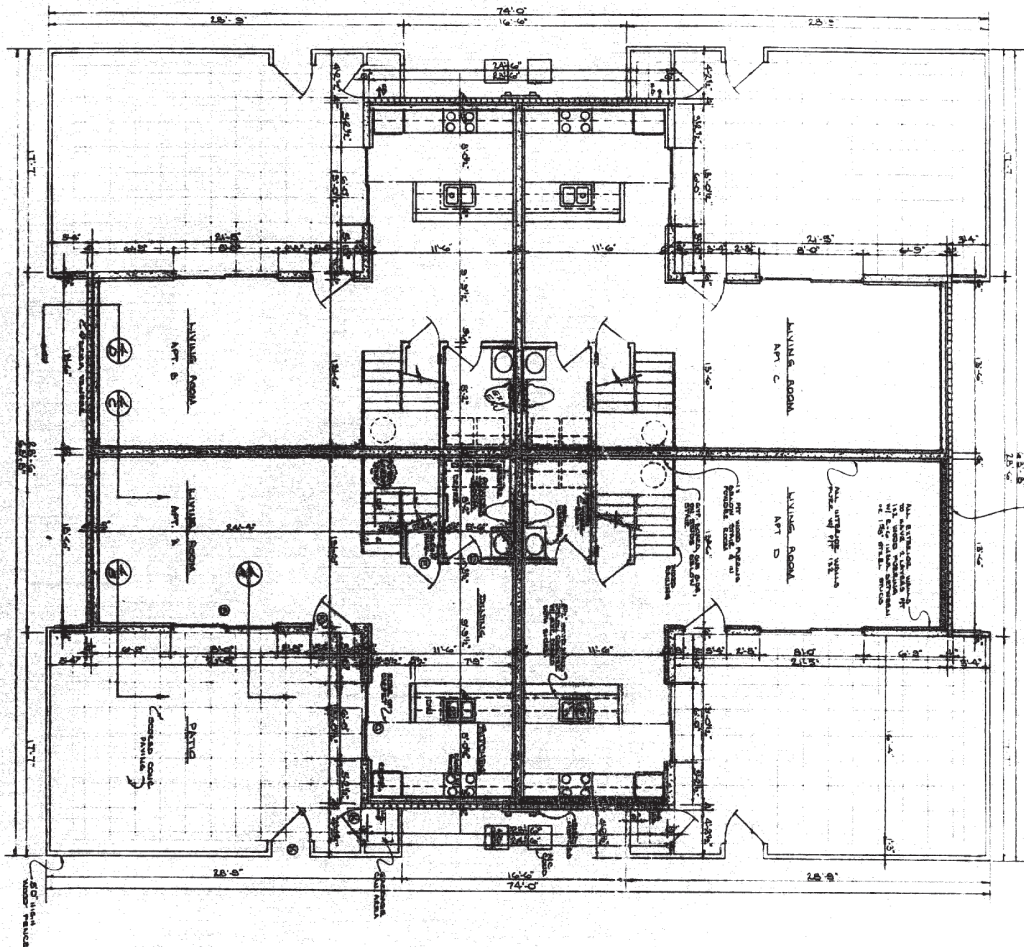
RONALD C. DALE  
 LANDSCAPE ARCHITECT (SOS) 094-1917  
 1216 EAST COLONIAL DRIVE SUITE 3 ORLANDO FL 32802



NORTH  
SCALE 1"=20'-0"

MIDDLEBROOK PINES

RONALD C DALE  
LANDSCAPE ARCHITECT (305) 854-1572  
1212 EAST COLONIAL DRIVE SUITE 5 ORLANDO FL 32809



FOR RECORD OF OWNER, THE CONTRACTOR SHALL MAINTAIN A RECORD OF ALL CHANGES MADE TO THIS PLAN. ANY CHANGES SHALL BE MADE BY A CORRECTED SET OF THIS PLAN.

NO.	Q.T.Y.	TYPE	REMARKS
1	1	1/2" x 1/2" x 1/2"	PLASTER
2	1	1/2" x 1/2" x 1/2"	PLASTER
3	1	1/2" x 1/2" x 1/2"	PLASTER
4	1	1/2" x 1/2" x 1/2"	PLASTER
5	1	1/2" x 1/2" x 1/2"	PLASTER
6	1	1/2" x 1/2" x 1/2"	PLASTER
7	1	1/2" x 1/2" x 1/2"	PLASTER
8	1	1/2" x 1/2" x 1/2"	PLASTER
9	1	1/2" x 1/2" x 1/2"	PLASTER
10	1	1/2" x 1/2" x 1/2"	PLASTER
11	1	1/2" x 1/2" x 1/2"	PLASTER
12	1	1/2" x 1/2" x 1/2"	PLASTER
13	1	1/2" x 1/2" x 1/2"	PLASTER
14	1	1/2" x 1/2" x 1/2"	PLASTER
15	1	1/2" x 1/2" x 1/2"	PLASTER
16	1	1/2" x 1/2" x 1/2"	PLASTER
17	1	1/2" x 1/2" x 1/2"	PLASTER
18	1	1/2" x 1/2" x 1/2"	PLASTER
19	1	1/2" x 1/2" x 1/2"	PLASTER
20	1	1/2" x 1/2" x 1/2"	PLASTER

NO.	Q.T.Y.	TYPE	REMARKS
1	1	1/2" x 1/2" x 1/2"	PLASTER
2	1	1/2" x 1/2" x 1/2"	PLASTER
3	1	1/2" x 1/2" x 1/2"	PLASTER
4	1	1/2" x 1/2" x 1/2"	PLASTER
5	1	1/2" x 1/2" x 1/2"	PLASTER
6	1	1/2" x 1/2" x 1/2"	PLASTER
7	1	1/2" x 1/2" x 1/2"	PLASTER
8	1	1/2" x 1/2" x 1/2"	PLASTER
9	1	1/2" x 1/2" x 1/2"	PLASTER
10	1	1/2" x 1/2" x 1/2"	PLASTER
11	1	1/2" x 1/2" x 1/2"	PLASTER
12	1	1/2" x 1/2" x 1/2"	PLASTER
13	1	1/2" x 1/2" x 1/2"	PLASTER
14	1	1/2" x 1/2" x 1/2"	PLASTER
15	1	1/2" x 1/2" x 1/2"	PLASTER
16	1	1/2" x 1/2" x 1/2"	PLASTER
17	1	1/2" x 1/2" x 1/2"	PLASTER
18	1	1/2" x 1/2" x 1/2"	PLASTER
19	1	1/2" x 1/2" x 1/2"	PLASTER
20	1	1/2" x 1/2" x 1/2"	PLASTER

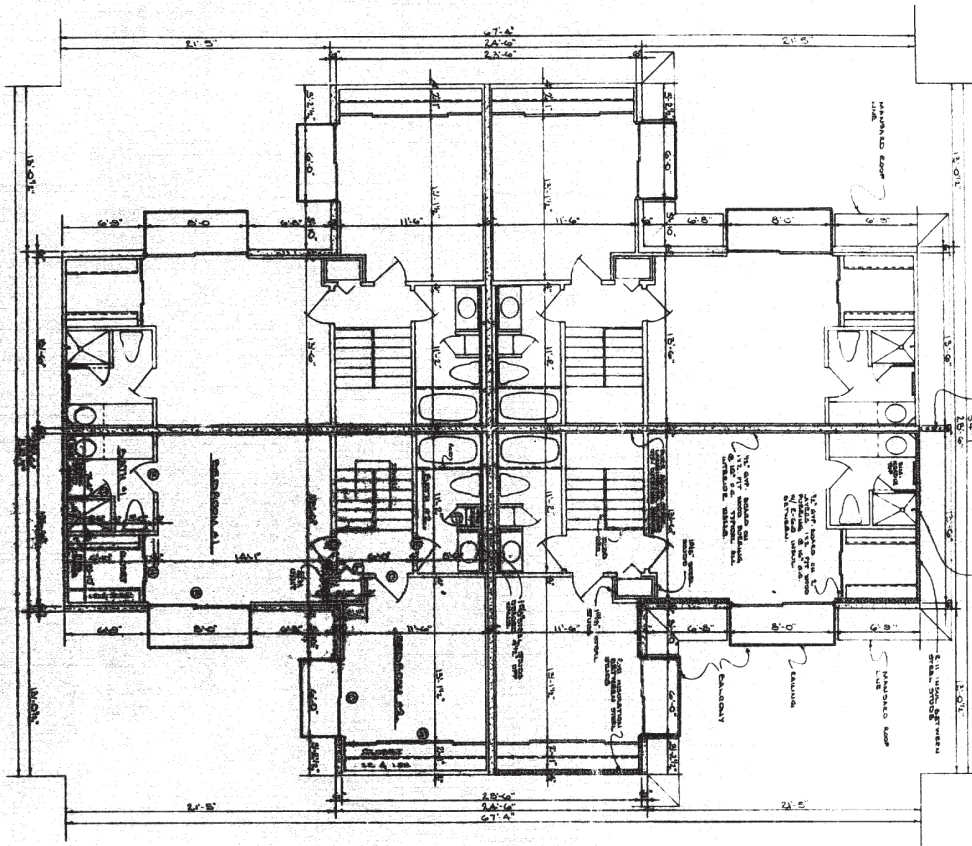
- Fire extinguishers - 1/2" type, water and foam, one in each unit, one in each common area.
- Listing devices on required exit doors shall be of the type which will operate from the inside of the door.
- Every closed door shall be such that children can not pass through the door from the inside of the door.
- Every common area shall be designed to permit the use of the building for the purpose of a day care center.
- Approved fire alarm system, shall be installed in accordance with the requirements of the Florida Building Code, Chapter 6, Part 6.05, and the Florida Building Code, Chapter 6, Part 6.06.
- Approved fire alarm system, shall be installed in accordance with the requirements of the Florida Building Code, Chapter 6, Part 6.05, and the Florida Building Code, Chapter 6, Part 6.06.
- Approved fire alarm system, shall be installed in accordance with the requirements of the Florida Building Code, Chapter 6, Part 6.05, and the Florida Building Code, Chapter 6, Part 6.06.
- Approved fire alarm system, shall be installed in accordance with the requirements of the Florida Building Code, Chapter 6, Part 6.05, and the Florida Building Code, Chapter 6, Part 6.06.
- Approved fire alarm system, shall be installed in accordance with the requirements of the Florida Building Code, Chapter 6, Part 6.05, and the Florida Building Code, Chapter 6, Part 6.06.
- Approved fire alarm system, shall be installed in accordance with the requirements of the Florida Building Code, Chapter 6, Part 6.05, and the Florida Building Code, Chapter 6, Part 6.06.

**BUILDING INSPECTOR**  
 THESE PLANS HAVE BEEN REVIEWED AND FOUND TO BE IN ACCORDANCE WITH THE FLORIDA BUILDING CODE, CHAPTER 6, PART 6.05, AND THE FLORIDA BUILDING CODE, CHAPTER 6, PART 6.06.  
 APPROVED FOR THE CITY OF DELANDO, FLORIDA  
 CITY ENGINEER  
 APPROVED FOR THE STATE OF FLORIDA  
 STATE ENGINEER  
 APPROVED FOR THE COUNTY OF DELANDO, FLORIDA  
 COUNTY ENGINEER  
 APPROVED FOR THE TOWN OF DELANDO, FLORIDA  
 TOWN ENGINEER  
 APPROVED FOR THE CITY OF DELANDO, FLORIDA  
 CITY ENGINEER

**J. IFRAN ARCELLAS ARCHITECT**  
 100 MIDDLEBROOK PINES  
 A TOWNHOUSE COMPLEX  
 DELANDO, FLORIDA

DATE: JAN 1966  
 SHEET: 1/5

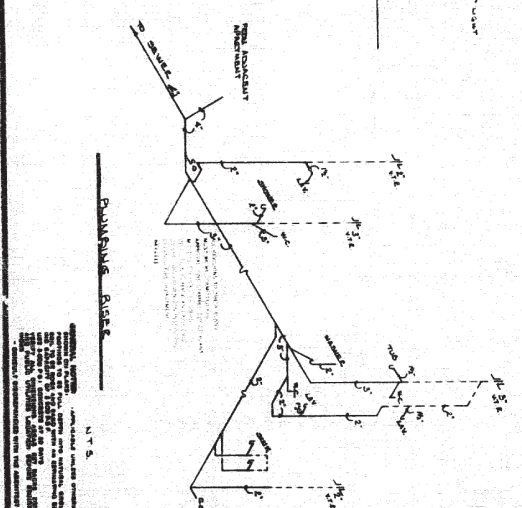
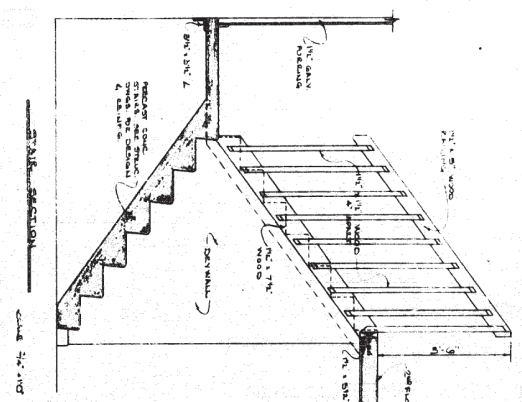
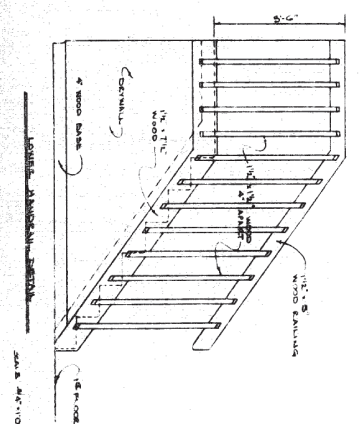
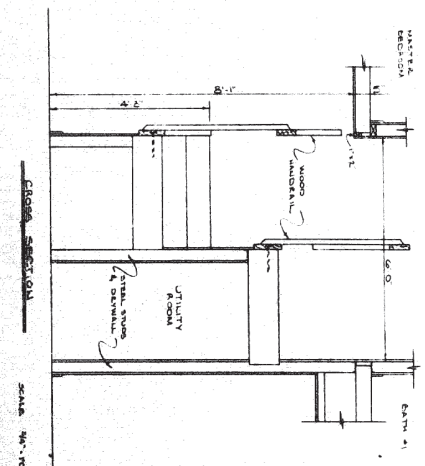
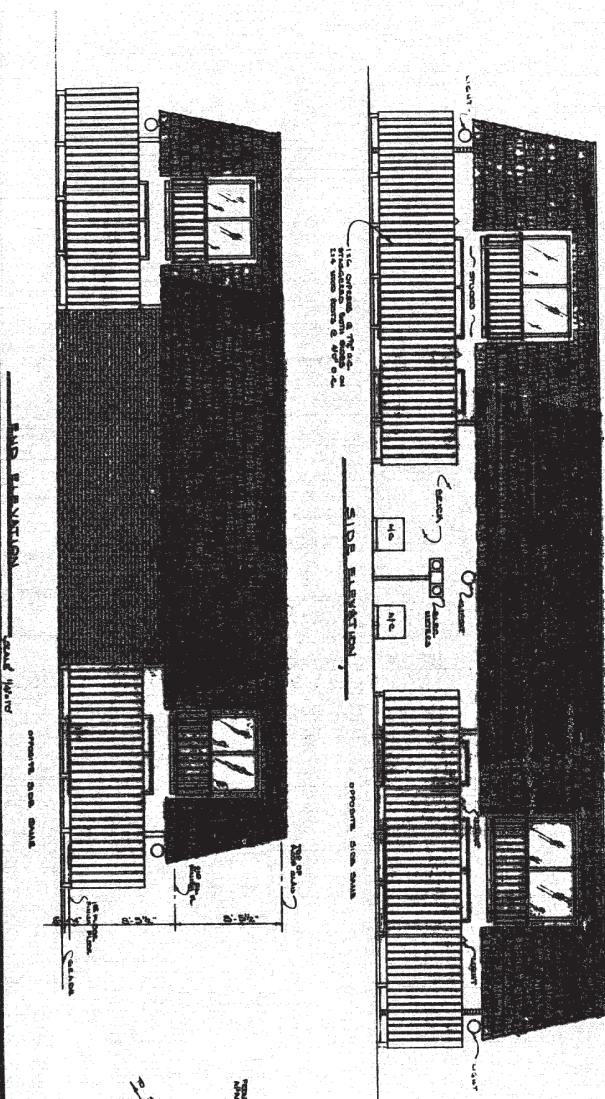




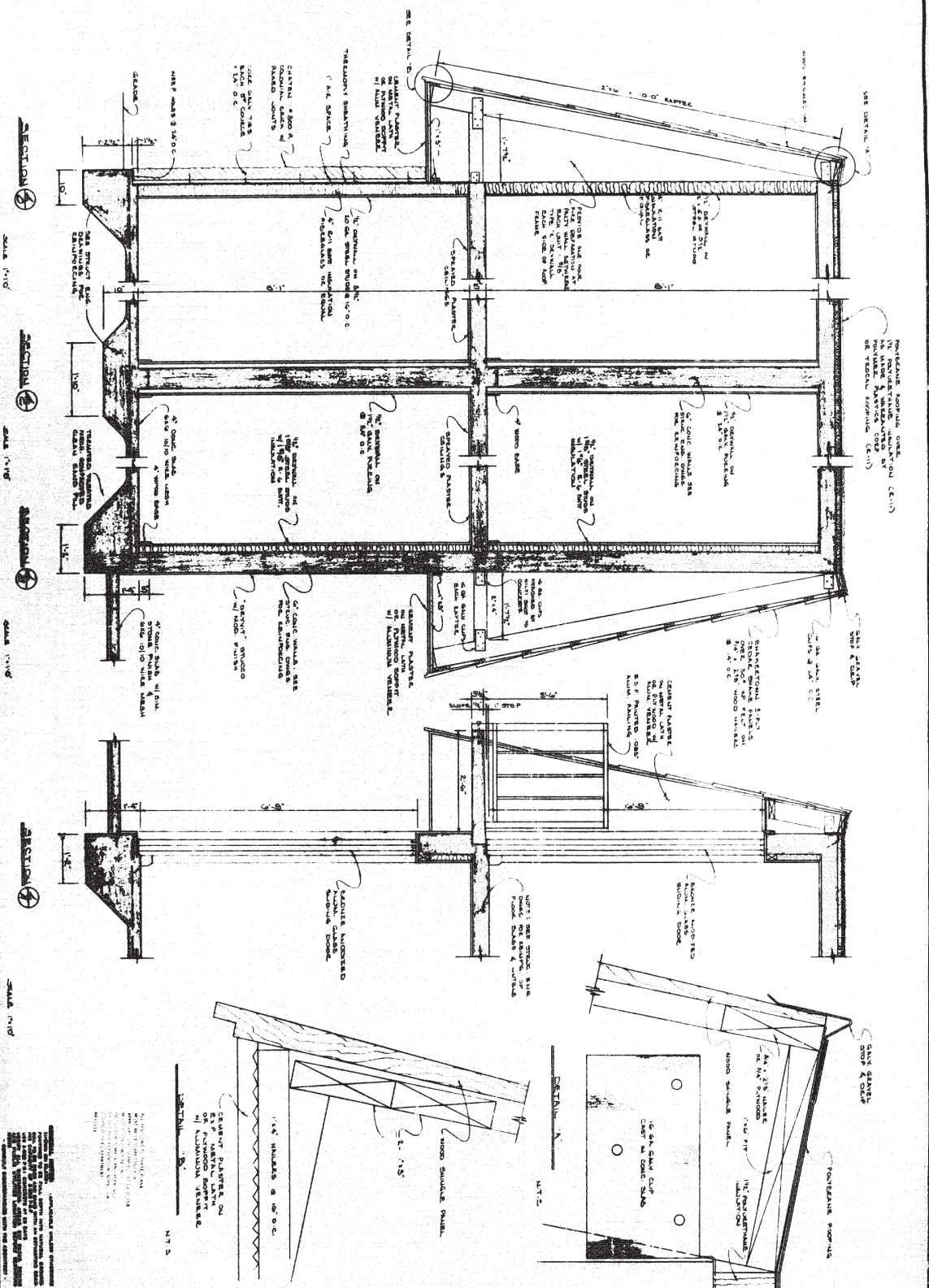
NOTE: ALL WALLS, PARTS, CASES, PARTITIONS, DOORS, WINDOWS, AND OTHER FINISHES TO BE PAINTED WITH A LIGHT COLORED PAINT. ALL WALLS, PARTITIONS, DOORS, WINDOWS, AND OTHER FINISHES TO BE PAINTED WITH A LIGHT COLORED PAINT.

THIS DRAWING IS THE PROPERTY OF J. FRANK ARCHULES ARCHITECT. IT IS TO BE USED ONLY FOR THE PROJECT AND SITE SPECIFICALLY IDENTIFIED HEREON. IT IS NOT TO BE REPRODUCED, COPIED, OR TRANSMITTED IN ANY FORM OR BY ANY MEANS, ELECTRONIC OR MECHANICAL, INCLUDING PHOTOCOPYING, RECORDING, OR BY ANY INFORMATION STORAGE AND RETRIEVAL SYSTEM, WITHOUT THE WRITTEN PERMISSION OF J. FRANK ARCHULES ARCHITECT.

	<b>J. FRANK ARCHULES</b> <b>ARCHITECT</b> <small>OFFICE: 1000 PALM BEACH BLVD. - SUITE 100 - PALM BEACH, FLORIDA 33480          PHONE: 561-832-1111</small>	PROJECT: MIDDLEBROOK PINES A TOWNHOUSE COMPLEX	SHEET NAME: 2ND FLOOR PLAN	COMP. NO.: 88100 DRAWN: E.S. DATE: JAN. 1985	SHEET 
		ADDRESS: ORLANDO, FLORIDA	SCALE: 1/4" = 1'-0"	DATE:	

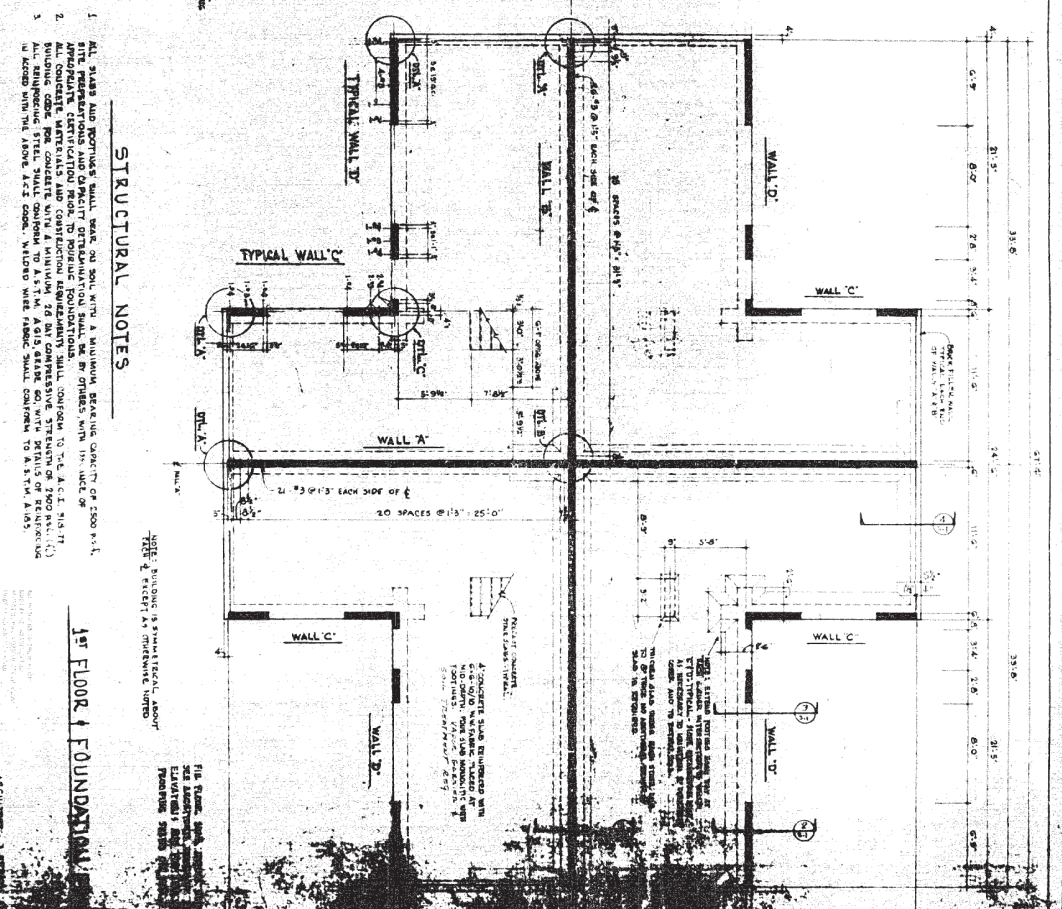
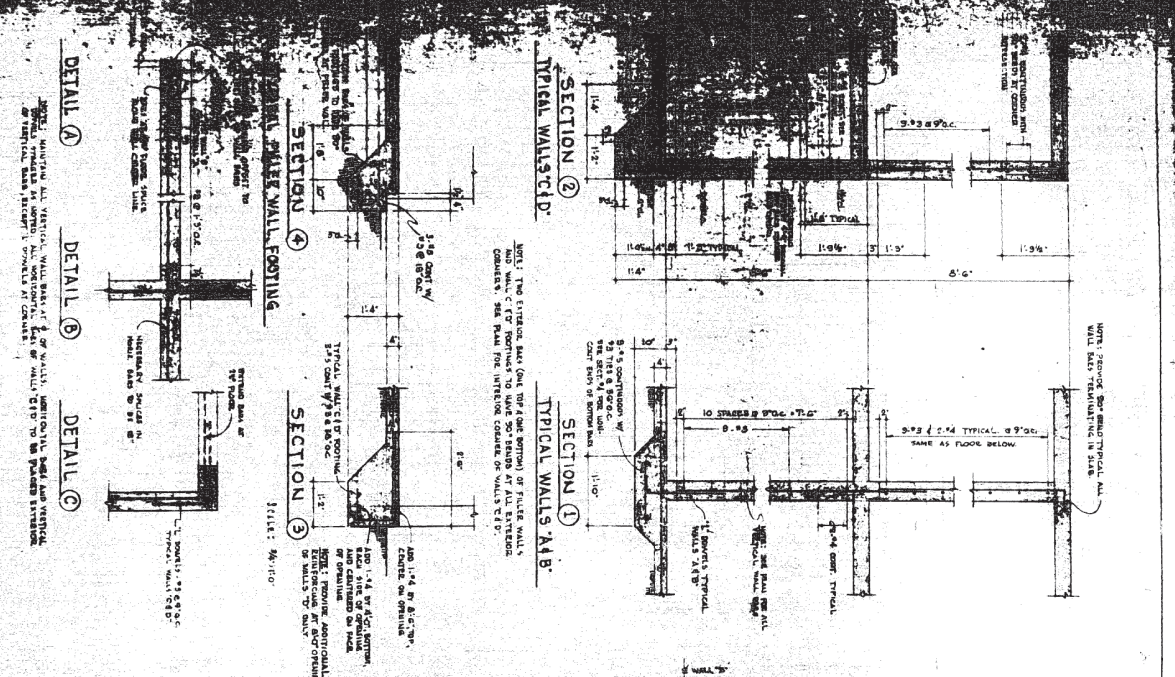


	<b>J. FRANK ARQUELLES</b> <b>ARCHITECT</b>	FOR MIDDLEBROOK PINES A TOWNHOUSE COMPLEX OLANDO, FLORIDA	SHEET NAME ELEVATIONS, SECTIONS, PLANNING RISE	DRAWN C.D. REVISION DATE 03/11/1955 REVISION	
	1955 1955	NO NOTED	SHEET 5/3		



<b>J. BRAIN ARQUELLES</b> <b>ARCHITECT</b> 1000 SOUTH PALM BEACH BL. - PALM BEACH PALM BEACH, FLORIDA	NO. MIDDLEBURY PINES A TOWNHOUSE COMPLEX OCEANVIEW, FLORIDA	SHEET NAME <b>SECTIONS</b> DETAILS SCALE AS NOTED	DRAWING NO. <b>55100</b> DRAWN <b>C.D.</b> DATE <b>JAN 1955</b> REVISIONS	SHEET <b>4</b> <b>5</b>
	1/4" UNITS & 1/8" O.C. CEILING PLASTER ON 1/2" PLYWOOD SUPPORT OF ALUMINUM STRIPS.			





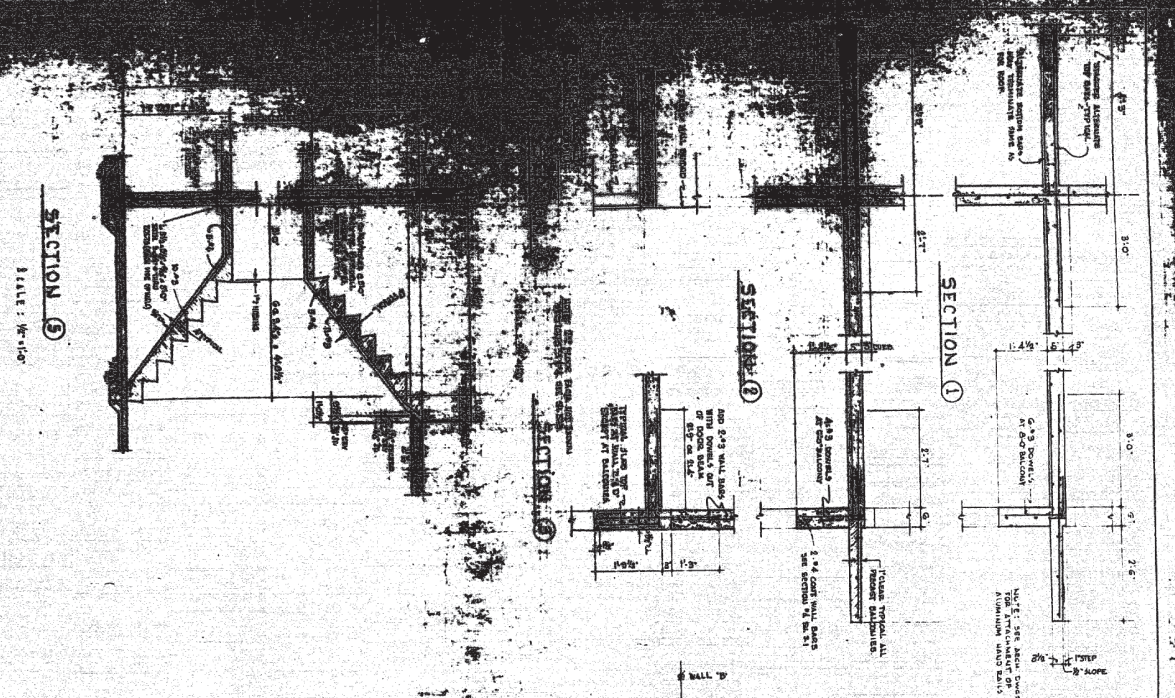
**STRUCTURAL NOTES**

1. ALL WALLS AND FOOTINGS SHALL BE CONCRETE WITH A MINIMUM BEARING CAPACITY OF 2500 P.S.F. AND SHALL BE REINFORCED WITH STEEL.
2. ALL WALLS AND FOOTINGS SHALL BE CONCRETE WITH A MINIMUM BEARING CAPACITY OF 2500 P.S.F. AND SHALL BE REINFORCED WITH STEEL.
3. ALL WALLS AND FOOTINGS SHALL BE CONCRETE WITH A MINIMUM BEARING CAPACITY OF 2500 P.S.F. AND SHALL BE REINFORCED WITH STEEL.

**1st FLOOR FOUNDATION**

ARCHITECT: J. B. SMITH

SCALE: AS SHOWN

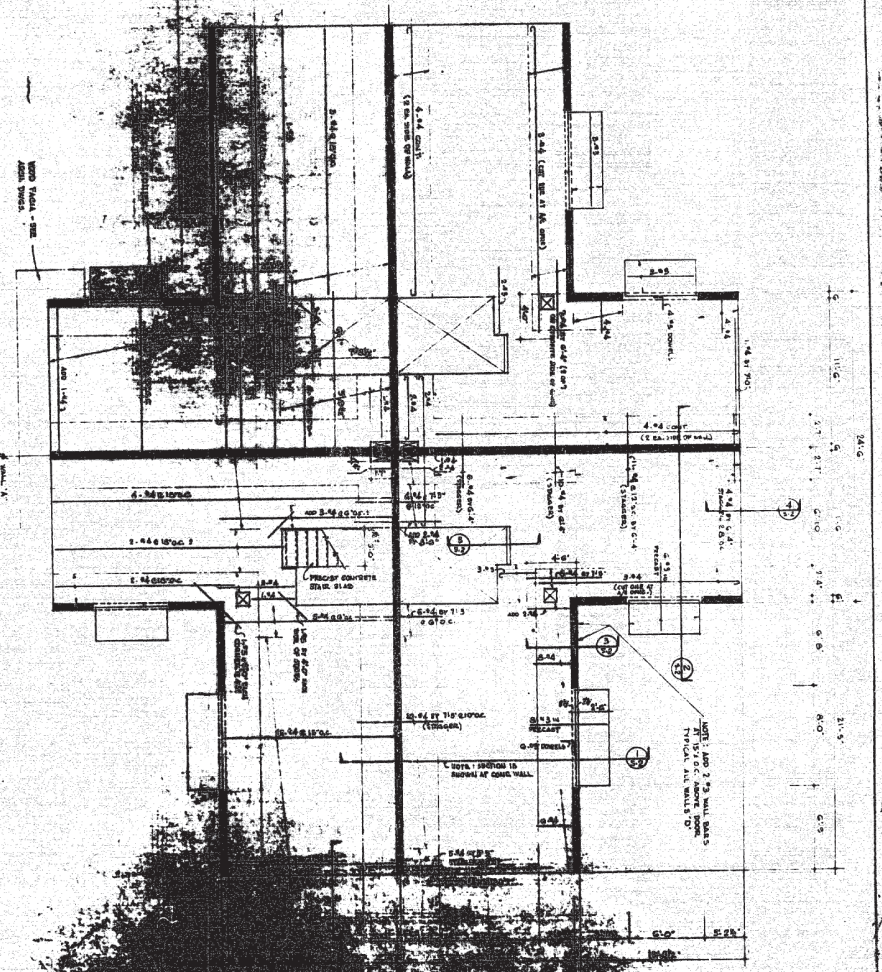


SECTION ⑤

SCALE: 1/4" = 1'-0"

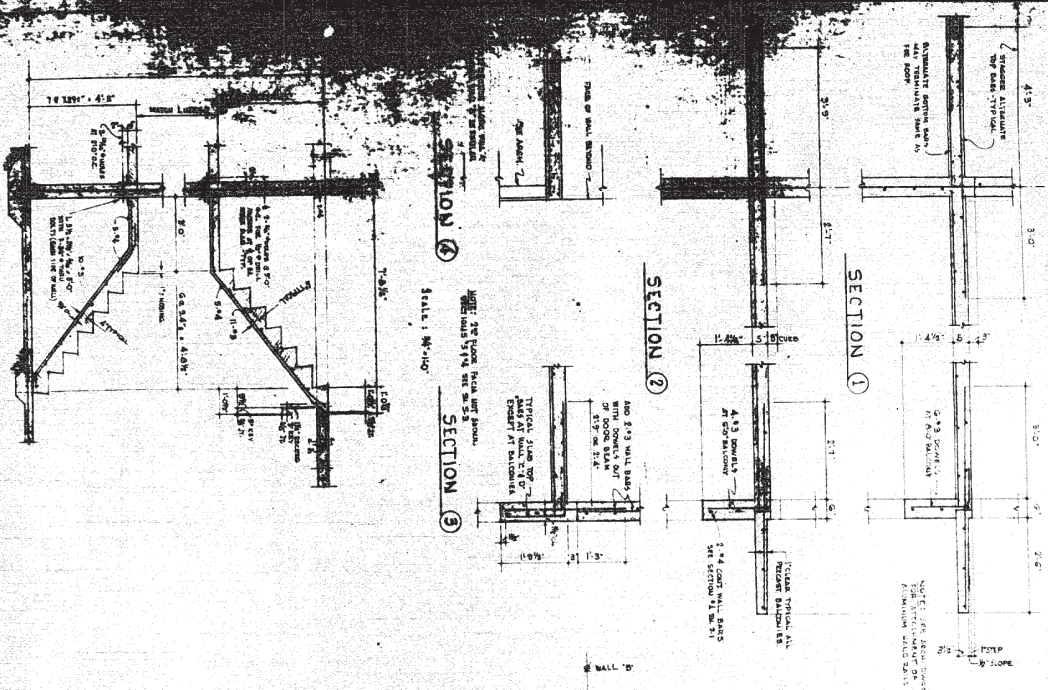
**DESIGN LOADS**  
 DEAD LOAD = 20 LB  
 LIVE LOAD = 40 LB  
 WIND AT 90 DEGREE

FOR LINES OF WALL, JOIST, TRUSS, ETC.  
 CENTER LINE OF WALL, JOIST, TRUSS, ETC.  
 CENTER LINE OF WALL, JOIST, TRUSS, ETC.

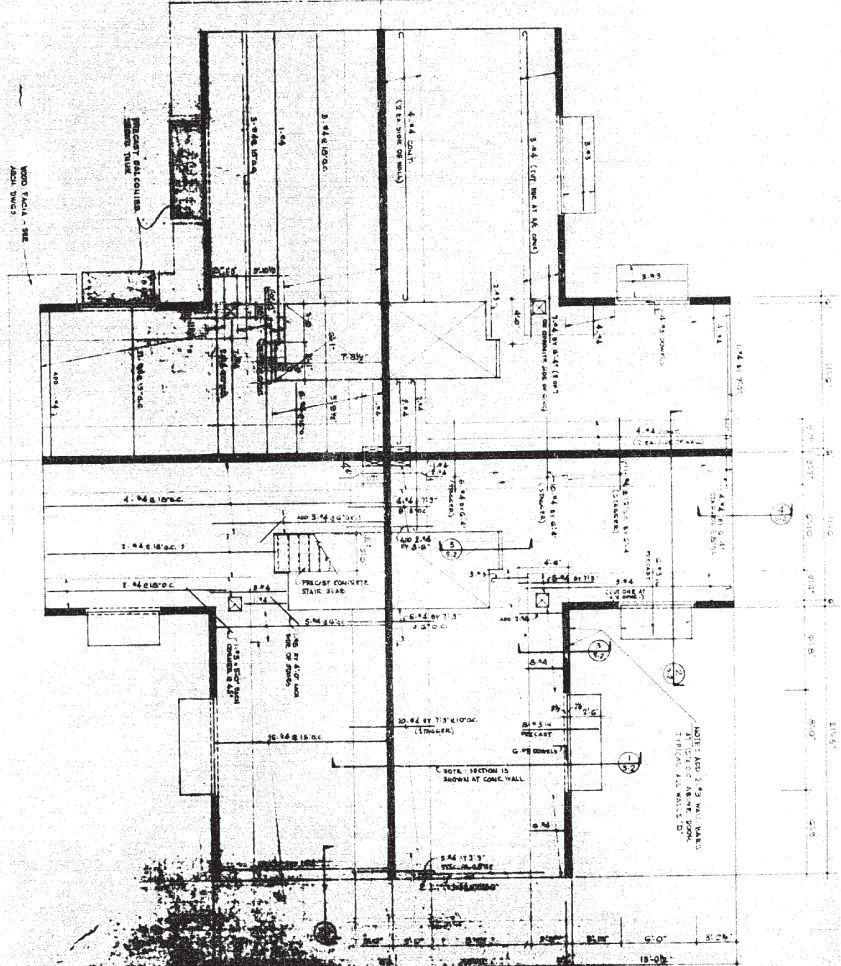


2<sup>ND</sup> FLOOR FRAMING PLAN

MIDDLEBROOK PAPER  
 1100 W. 10<sup>TH</sup> AVENUE  
 BOSTON, MASS.  
 1958



SECTION 5  
 SCALE: 1/4"=1'-0"



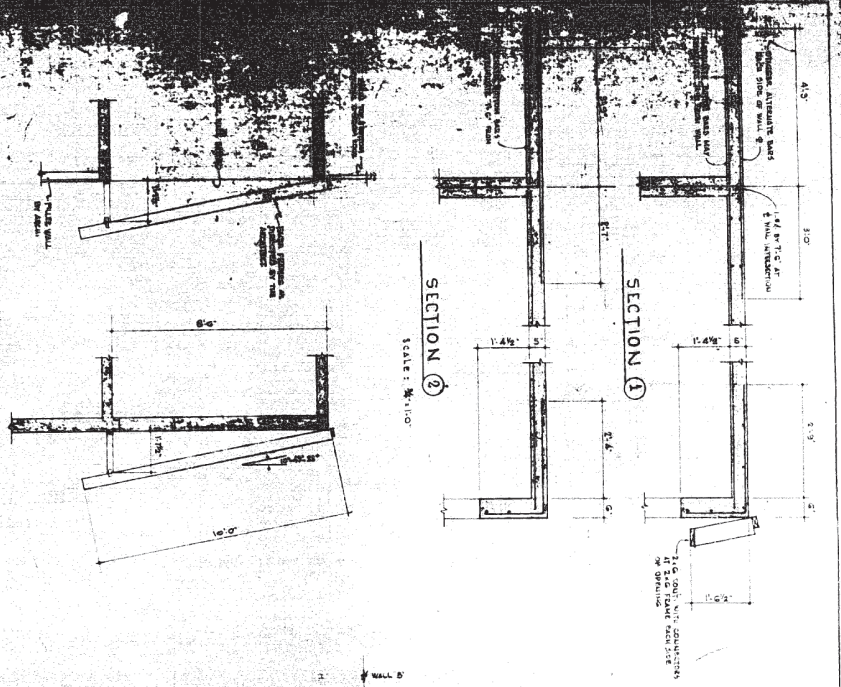
DESIGN LOADS  
 ROOF LIVE LOAD - 20 PSF  
 FLOOR LIVE LOAD - 40 PSF  
 WIND AT 100 M.P.H.

NOTE: REINFORCING IS SHOWN AT ALL WALL INTERSECTIONS.  
 EACH CENTER LINE EXCEPT AT WALL INTERSECTIONS.

MIDDLEBROOK PLAZA DALLAS, TEXAS
BITCHME & COOKER ENGINEERS PALM BEACH GARDENS, FLORIDA
DATE: 05/02/83
SCALE: 1/4"=1'-0"

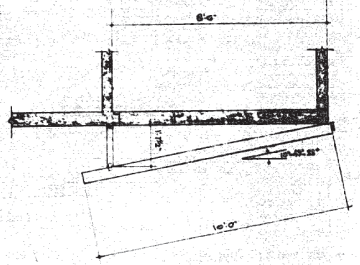
**SECTION ①**

SCALE: 3/8" = 1'-0"



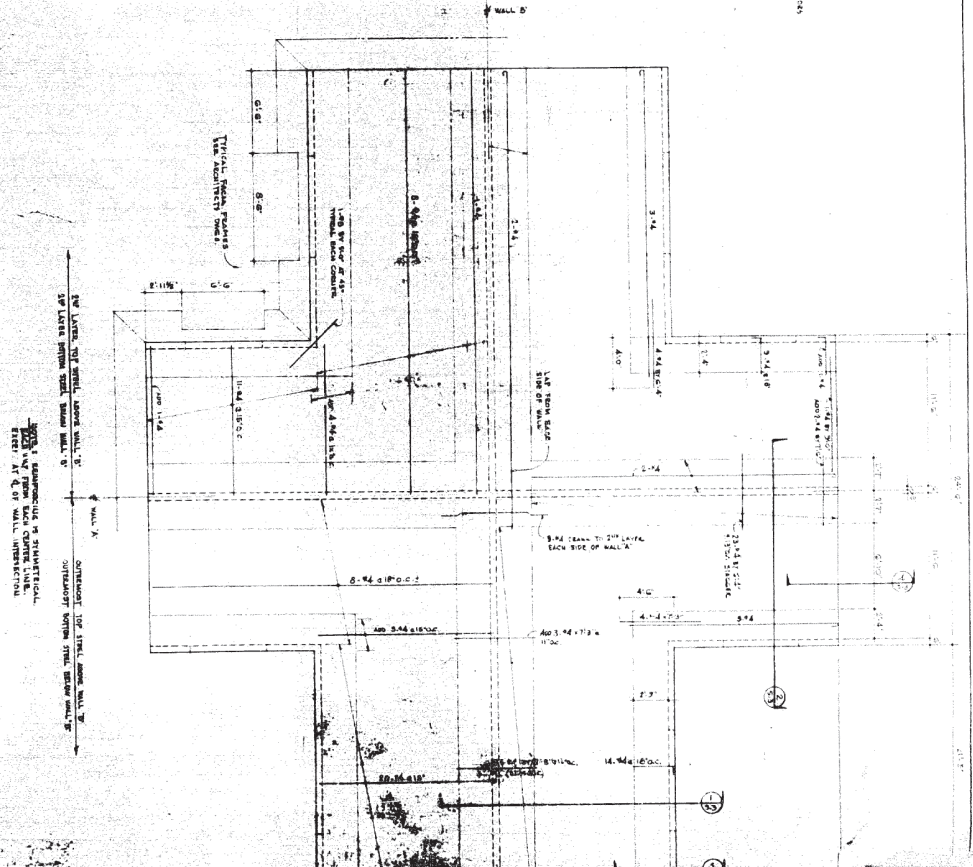
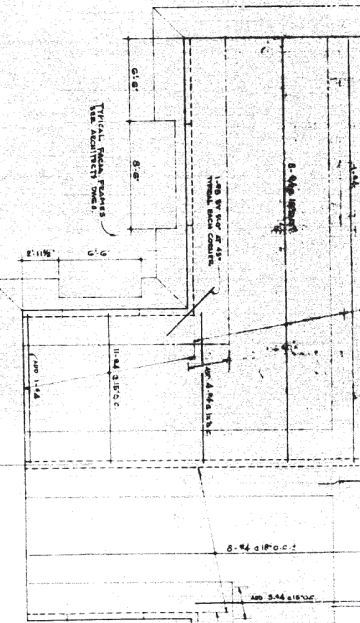
**SECTION ②**

SCALE: 3/8" = 1'-0"



**SECTION ③**

SCALE: 3/8" = 1'-0"



**ROOF FRAMING PLAN**

MIDDLEBURY STATE COLLEGE  
 OAKLAND - PLUMBING  
 RITCHIE & CROCKER  
 PLUMBING ENGINEERS  
 100 N. 10th St.  
 OAKLAND, CALIF.