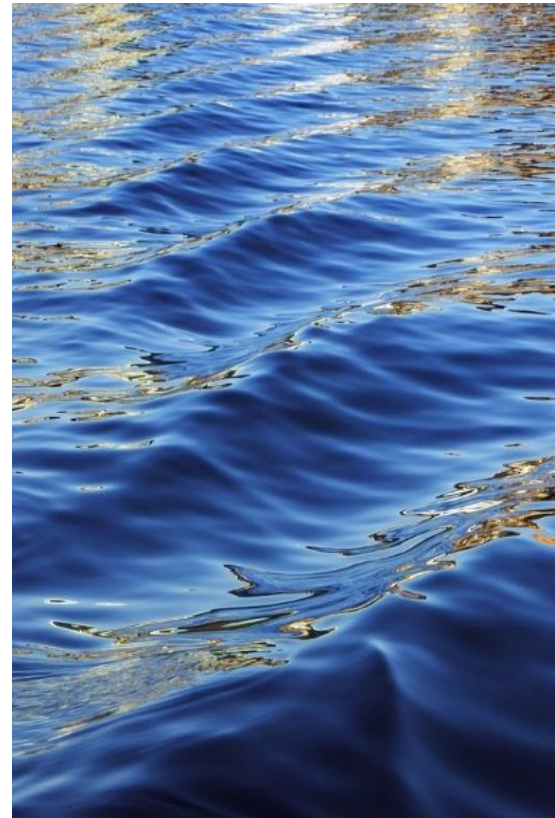




# Middlebrook Pines Recycling Plan

September 15, 2020



# Plan Details

## Considerations

- The quantity of recycle bins needed will be driven by the participation of the residents. With full participation, theoretically we would need more R-bins than T-bins. We recommend to begin with approximately a 1/3 ratio of R-bins.
- Current state is 24 trash bins and space for 2 more. With the reduction in pick-up costs, we should add these 2 bins as well as a new (test) bin for Cypress court.
- Proposed bin count would be 19 T-bins and 8 R-bins. We still will see a reduction in pick-up costs despite the addition of 3 more bins.
- Position R-bins to be as convenient as possible to residents and away from main entrances, where possible, to reduce transient dumping.
- We are working with the City in hopes that we can use the same 4-yard tall bin as they work for our space. Availability of bins will drive the start date.
- Contaminated containers are identified on location and prior to being dumped into the truck. Contaminated bins will be billed at the trash rate. We are awaiting answers as to how the billing and communication to MBP would occur. (i.e. prorate month for 1 of 4 dumps)

## Pick-up Changes

- Trash pick up will remain 2x per week on Tuesday and Friday.
- Recycle bin pick-up will be 1x per week but can be increased to 2x should it be needed.

## Implementation and Evolution

- The city's availability of containers and communication will drive the implementation date but all involved would like to begin as soon as possible.
- The City has agreed to react quickly to our changing needs as we assess usage and identify the right balance of T&R containers.
- Over the next few months, we will need to monitor T&R bins closely so that we can make needed changes quickly. Hoping that we can assign courts to Board Members for frequent monitoring.
- Recycle specific signage will be on recycle bin. We may want to replace our current dumpster signs and mount in a more visible placement.
- We are hopeful that if we have broad participation, we will be able to convert more trash to recycle and have future cost savings.

Times collected per week

## Recycling

Container size	1	2	3	4	5	6
Wheeled cart	\$7.83					
4 cubic yds.	\$62.64	\$125.28	\$187.92	\$250.56	\$313.20	\$375.84
4 cubic yds. w/casters	\$82.64	\$145.28	\$207.92	\$270.56	\$333.20	\$395.84
6 cubic yds.	\$93.96	\$187.92	\$281.88	\$375.84	\$469.80	\$563.76
8 cubic yds.	\$125.28	\$250.56	\$375.84	\$501.12	\$626.40	\$751.68

Times collected per week

## Garbage

Container size	1	2	3	4	5	6
95 gallon cart		\$31.08				
2 cubic yds.*	\$62.12	\$124.24	\$186.35	\$248.47	\$310.59	\$372.71
3 cubic yds.*	\$93.18	\$186.35	\$279.53	\$372.71	\$465.89	\$559.06
4 cubic yds.*	\$124.24	\$248.47	\$372.71	\$496.94	\$621.18	\$745.42
6 cubic yds.	\$186.35	\$372.71	\$559.06	\$745.42	\$931.77	\$1,118.12
7 cubic yds.	\$217.41	\$434.83	\$652.24	\$869.65	\$1,087.07	\$1,304.48
8 cubic yds.	\$248.47	\$496.94	\$745.42	\$993.89	\$1,242.36	\$1,490.83

### Current

	#	Cost/Mo.	Total
4 Yard Trash	24	\$248.47	\$5,963.28
Casters	21	\$20.00	\$420.00
<b>Total Cost</b>			<b>\$6,383.28</b>

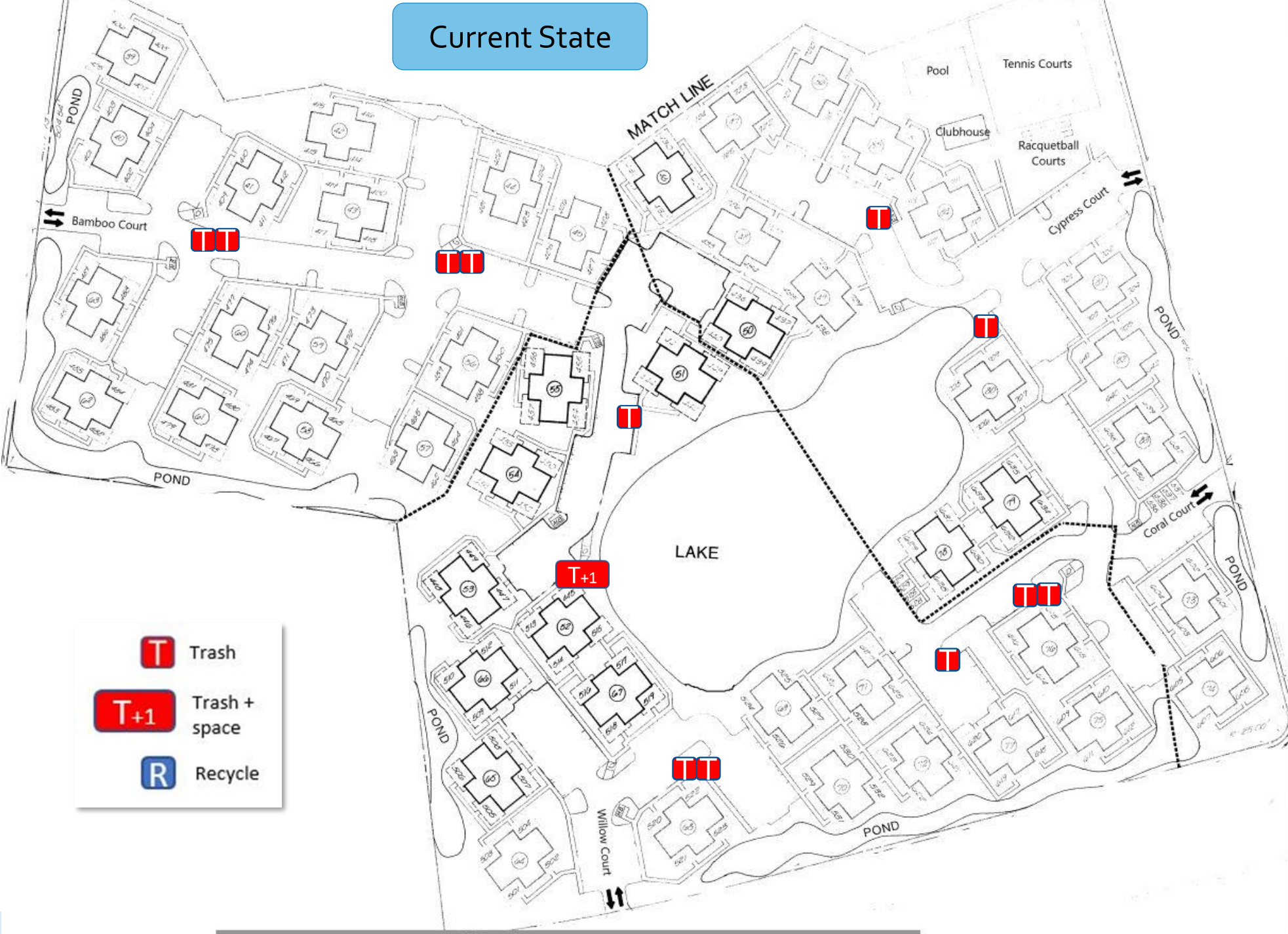
### Trash 2x week/Recycle 1x week

	#	Cost/Mo.	Total
4 Yard Trash	19	\$248.47	\$4,720.93
Casters	19	\$20.00	\$380.00
Recycle incl casters	8	\$82.64	\$661.12
<b>Total Cost</b>			<b>\$5,762.05</b>

### Trash 2x week/Recycle 2x week

	#	Cost/Mo.	Total
4 Yard Trash	19	\$248.47	\$4,720.93
Casters	19	\$20.00	\$380.00
Recycle incl casters	8	\$145.28	\$1,162.24
<b>Total Cost</b>			<b>\$6,263.17</b>

# Current State



Trash

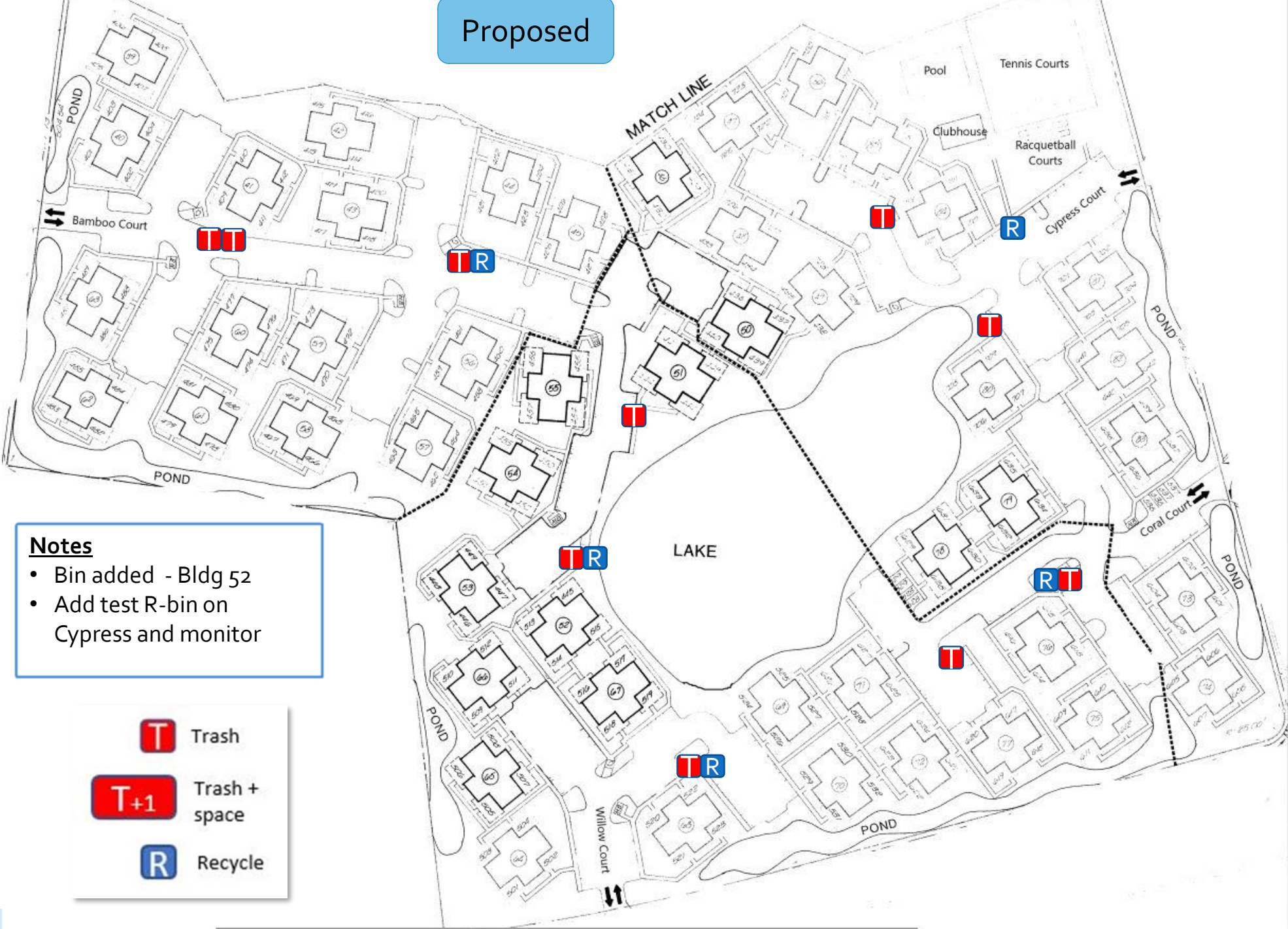


Trash +  
space



Recycle

# Proposed



## Notes

- Bin added - Bldg 52
- Add test R-bin on Cypress and monitor

**T** Trash

**T+1** Trash + space

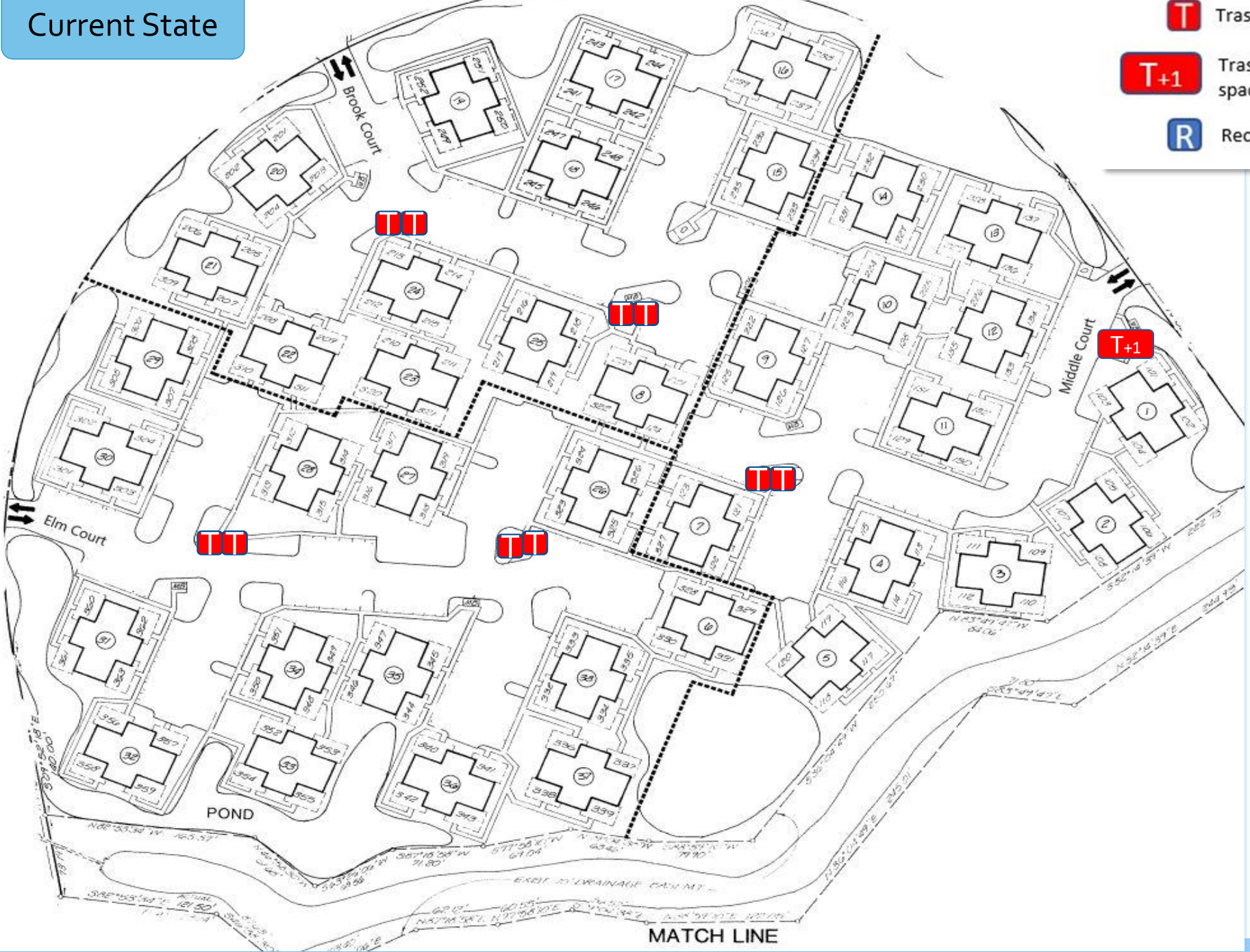
**R** Recycle

# Current State

**T** Trash

**T+1** Trash + space

**R** Recycle



T+1

T+1

T+1

T+1

T+1

T+1

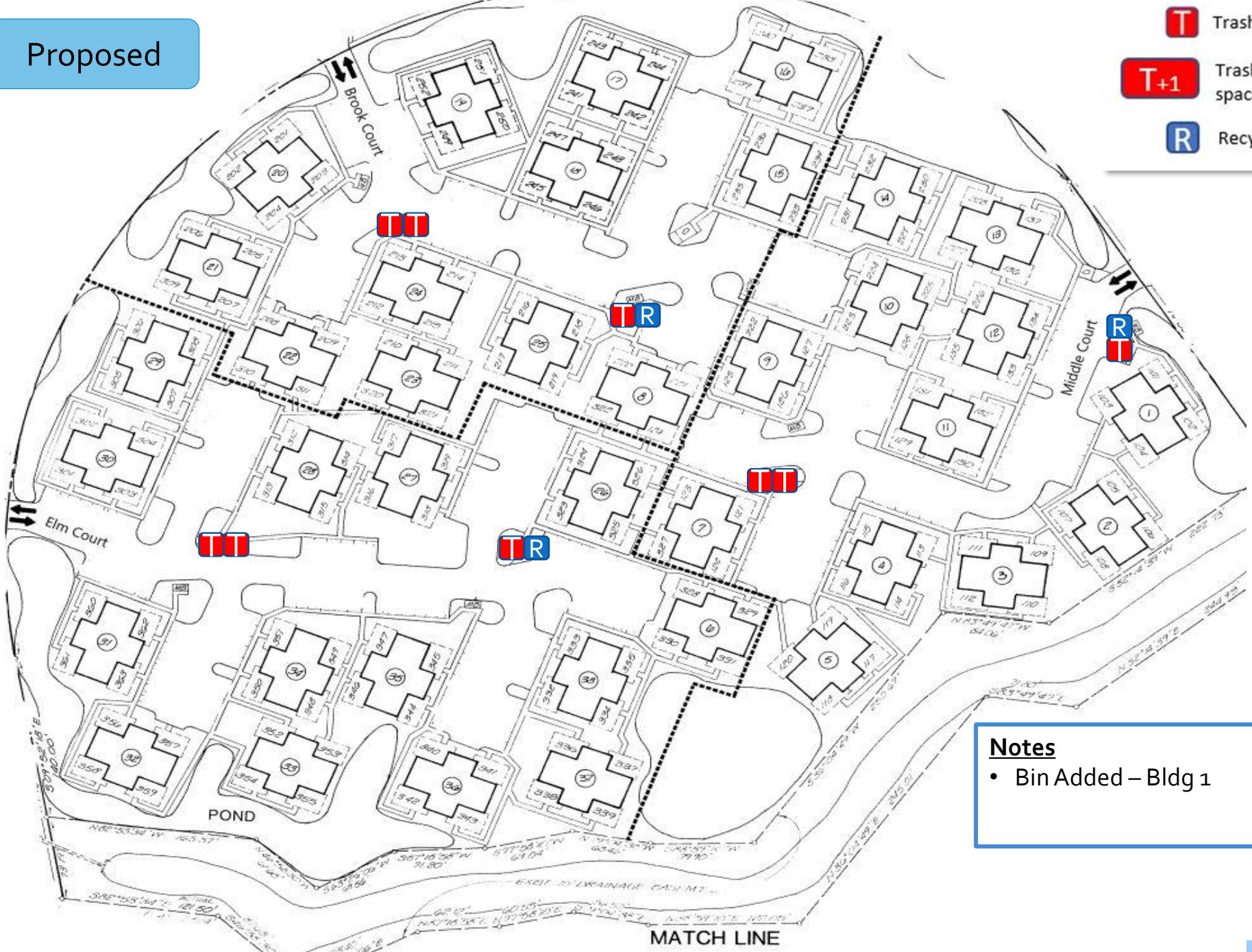
T+1

POND

MATCH LINE

Proposed

**T** Trash  
**T+1** Trash + space  
**R** Recycle



**Notes**

- Bin Added – Bldg 1

MATCH LINE